



Inspection Auto Gocarz Export

Gocarz France / Vw camper / 304 YUW

Complete

Score	107 / 122 (87.71%)	Flagged items	2	Actions	0
--------------	--------------------	----------------------	---	----------------	---

Site conducted Unanswered

Réalisé le / Conducted on : 30.08.2023 16:21 BST

Nom de l'inspecteur / Inspector's name : Gocarz France

Localisation / Location : 7 Manor Road
Ipswich
Angleterre
IP7 6PN
Royaume-Uni
(52.08963727878917,
0.9818984365615688)

Immatriculation véhicule / Car registration # : 304 YUW

Marque & Modèle de véhicule / Car's Make & Model Vw camper

Flagged items

2 flagged

Soubassements, Chassis / Underbody

Trace de fuite d'huile / Sign of oil leak?

Possible

Mécanique / Mechanic

Code(s) erreur trouvés / Fault code(s) found ?

N/A

Condition de la carrosserie / Bodywork condition ?

Bien / Good



Photo 1



Photo 2



Photo 3



Photo 4



Photo 5



Photo 6



Photo 7

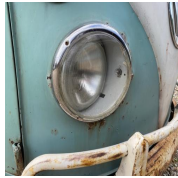


Photo 8

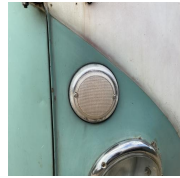


Photo 9



Photo 10

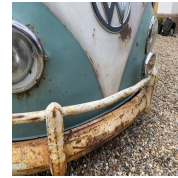


Photo 11



Photo 12



Photo 13



Photo 14



Photo 15



Photo 16



Photo 17



Photo 18



Photo 19



Photo 20



Photo 21



Photo 22



Photo 23



Photo 24

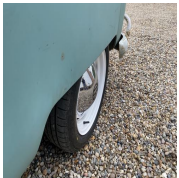


Photo 25



Photo 26



Photo 27



Photo 28



Photo 29



Photo 30



Photo 31



Photo 32

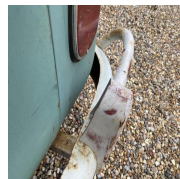


Photo 33



Photo 34



Photo 35

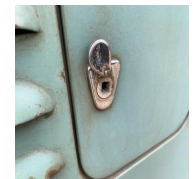


Photo 36



Photo 37



Photo 38

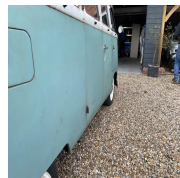


Photo 39



Photo 40

Condition des Jantes / Rims condition ?

Très bien / Very good



Photo 41



Photo 42



Photo 43



Photo 44

Véhicule repeint / Resprayed vehicle ?

Possible

Ailes arrières réparations avec matières non métalliques



Photo 45

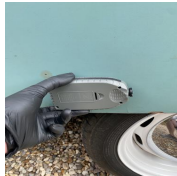


Photo 46

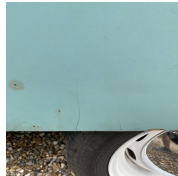


Photo 47



Photo 48



Photo 49

Qualité Peinture / Paint condition ?

Moyen / Medium

Trace d'accident / Sign of accident ?

Non Visible

Le coffre souffre-t-il de déformations, réparations ou corrosion / Boot showing signs of deformations, repairs or corrosion ?

No



Photo 50



Photo 51

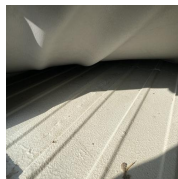


Photo 52



Photo 53

Condition du toit ou de la capote / Roof condition (Convertible) ?

Bien / Good

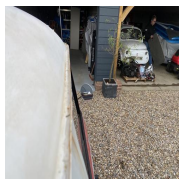


Photo 54



Photo 55



Photo 56



Photo 57



Photo 58



Photo 59



Photo 60



Photo 61



Photo 62



Photo 63



Photo 64



Photo 65

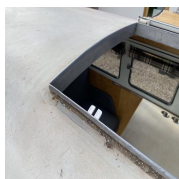


Photo 66



Photo 67

Etat de l'intérieur / Interior condition ?

Très bien / Very good



Photo 68



Photo 69



Photo 70



Photo 71



Photo 72



Photo 73



Photo 74



Photo 75



Photo 76



Photo 77



Photo 78

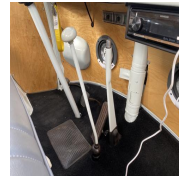


Photo 79



Photo 80



Photo 81



Photo 82



Photo 83



Photo 84



Photo 85



Photo 86



Photo 87



Photo 88



Photo 89



Photo 90



Photo 91



Photo 92

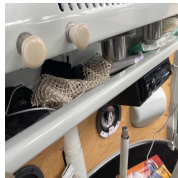


Photo 93

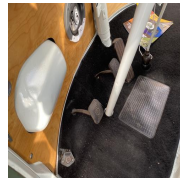


Photo 94



Photo 95



Photo 96



Photo 97



Photo 98



Photo 99



Photo 100

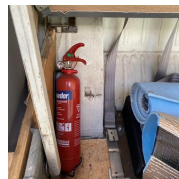


Photo 101

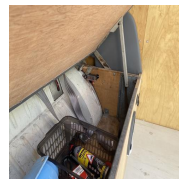


Photo 102

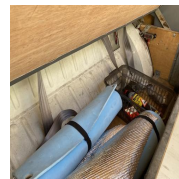


Photo 103

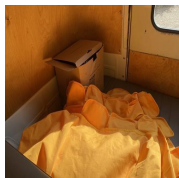


Photo 104

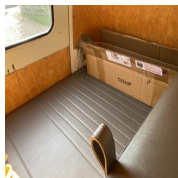


Photo 105

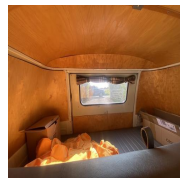


Photo 106










Photo 107

Mileage (Miles)

58356



Photo 108

Témoins allumés / Dashboard lights on ?	No
Klaxon fonctionnel / Horn working ?	Yes
Fermeture centralisée fonctionnelle / Central locking working ?	N/A
Fenêtres fonctionnelles / Windows working ?	Yes
Rétroviseurs fonctionnels / Mirrors working ?	N/A
Unité centrale fonctionnelle / Head unit working ?	N/A
Essuis glace fonctionnels / Wipers working ?	Yes
Eclairage fonctionnel / All lights working ?	Yes
     	
	
Ouverture - Fermeture de toutes les portes / All doors opening - closing ?	Yes
Ceintures de sécurité fonctionnelles / Seatbelts fastening - unfastening ?	N/A
Parre-brise - fenêtres - rétroviseurs intacts / Windshield - windows - mirrors free from cracks ?	Yes
Toit ouvrant fonctionnel / Sunroof working ?	Yes

Corrosion du châssis / Chassis corrosion ?

Très bien / Very good

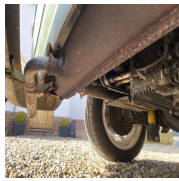


Photo 116

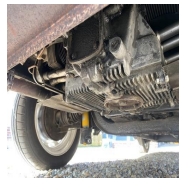


Photo 117

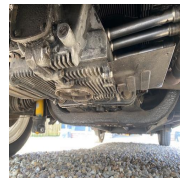


Photo 118

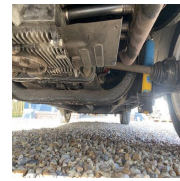


Photo 119

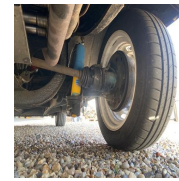


Photo 120

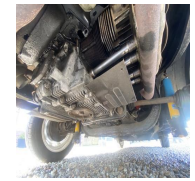


Photo 121

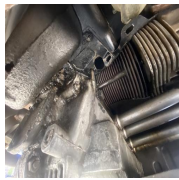


Photo 122



Photo 123

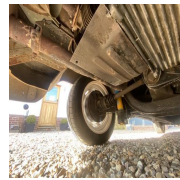


Photo 124

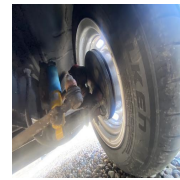


Photo 125

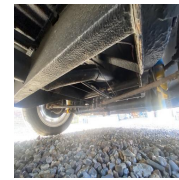


Photo 126

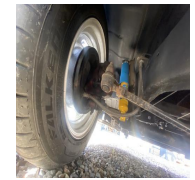


Photo 127

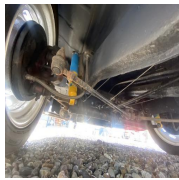


Photo 128

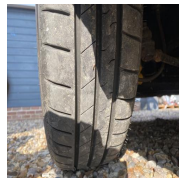


Photo 129

Trace de fuite d'huile / Sign of oil leak?

Possible

Possibilité d'utiliser un pont ou une fosse

No

Corrosion / Rust

2 / 3 (66.67%)

Etat general du véhicule sur la corrosion / General rust condition ?

Bien / Good

Détails localisation corrosion / Rust location details

Carrosserie / Bodywork

Pare-chocs / Bumpers

Consommables & Fluides / Consumables & Fluids		36 / 36 (100%)
Roue de secours - galette en bon état / Spare wheel in good condition ?		Yes
Etat des pneus avant / Front tyres condition :		OK
Pneus avant identiques / Front matching tyres ?		Yes
Etat des pneus arrière / Rear tyres condition :		OK
Pneus arrières identiques / Rear matching tyres ?		Yes
Freins avant / Front brakes		OK
Freins arrière / Rear brakes		OK
Liquide de frein / Brake fluid		OK
Etat des courroies / Belts condition (timing & auxiliary):		OK
Huile moteur (état - niveau) / Engine oil (condition - level)		OK
Liquide de refroidissement (état - niveau) / Coolant (condition - level)		N/A
Huile de BV (état - niveau) / Gearbox oil (condition - level)		N/A

Baie moteur accessible / Engine bay accessible ?

Yes

Etat général baie moteur / General condition engine bay ?

Bien / Good



Photo 130



Photo 131

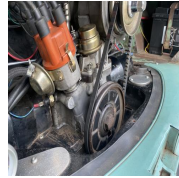


Photo 132



Photo 133



Photo 134



Photo 135



Photo 136

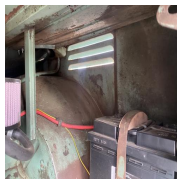


Photo 137

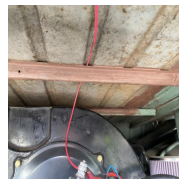


Photo 138

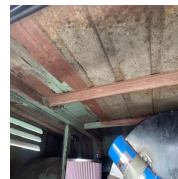


Photo 139



Photo 140

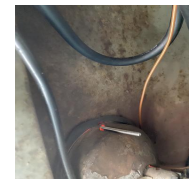


Photo 141



Photo 142

Vidéo moteur tournant / Video running engine (cold & warm)

Transmis par WhatsApp

Vidéo gaz d'échappement / Video exhaust gas

Transmis par WhatsApp

Code(s) erreur trouvés / Fault code(s) found ?

N/A

Essai routier / Test drive

1 / 1 (100%)

Véhicule roulant / Car running ?

Yes

Essai routier effectué par l'inspecteur? / Car test driven by inspector personally?

No

Conditions

sec / dry

ville / town roads

10 - 15 min

Moteur / Engine (Bruits , vibrations, fumées / Noises, vibrations, smoke) :

OK

Transmission (Bruits , vibrations, fumées / Noises, vibrations, smoke) :

OK

Suspensions (Condition) :

OK

Ressenti direction / Steering wheel abnormal sensations ?



Safe

Conditions véhicule de collection / Classic cars Regulation

3 / 3 (100%)

Agé d'au moins 30 ans / More than 30 years old car

Yes

Correspondre à un modèle ou à un type dont la production a cessé / Car currently not produced

Yes

Se trouver dans leur état d'origine sans modifications substantielles du châssis de la carrosserie, du système de direction, de freinage, de transmission, ou de suspension ni du moteur / Car is conformed to original production without any substantial modification of bodywork, transmission, breaks, gearbox, suspension, engine.

Yes

Administratif

7 / 9 (77.78%)

Nombre de clefs / Number of keys ?

2

Toutes les clefs fonctionnelles / All keys working ?

Yes

Ecrou antivol présent / Locking nut available ?

N/A

HPI check (base de donnée des assurances) :

N/A

Cat D signifie que le coût des réparations des dommages subits est inférieur au prix argus du véhicule, Cat C le coût des réparations dépasse le prix argus, Cat B le véhicule peut être vendu en pièces détachées uniquement et enfin Cat A, le véhicule ne peut être que détruit.

Correspondance VIN / Matching VIN (chassis, V5, pare-brise / windshield) :

Yes



Photo 143

V5 disponible / Available V5 ?

Yes

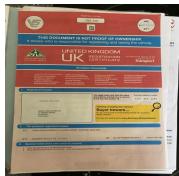


Photo 144



Photo 145

Date du dernier CT / Last MOT Test date ?

Non Concerné

Carnet d'entretien et-ou factures vérifiés / Service book and-or invoices checked ?

Présence Carnet + Factures



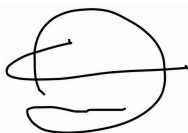
Photo 146



Photo 147



Photo 148



31.08.2023 11:49 BST

Media summary



Photo 1



Photo 2



Photo 3



Photo 4



Photo 5



Photo 6



Photo 7



Photo 8



Photo 9



Photo 10



Photo 11



Photo 12



Photo 13



Photo 14



Photo 15



Photo 16



Photo 17



Photo 18



Photo 19



Photo 20



Photo 21



Photo 22



Photo 23



Photo 24



Photo 25



Photo 26



Photo 27



Photo 28



Photo 29



Photo 30



Photo 31



Photo 32



Photo 33



Photo 34



Photo 35



Photo 36



Photo 37



Photo 38



Photo 39



Photo 40



Photo 41



Photo 42



Photo 43



Photo 44



Photo 45



Photo 46



Photo 47



Photo 48



Photo 49



Photo 50



Photo 51



Photo 52



Photo 53



Photo 54



Photo 55



Photo 56



Photo 57



Photo 58



Photo 59



Photo 60



Photo 61



Photo 62



Photo 63



Photo 64



Photo 65



Photo 66



Photo 67



Photo 68



Photo 69



Photo 70



Photo 71



Photo 72



Photo 73



Photo 74



Photo 75



Photo 76



Photo 77



Photo 78



Photo 79



Photo 80



Photo 81



Photo 82



Photo 83



Photo 84



Photo 85



Photo 86



Photo 87



Photo 88



Photo 89



Photo 90



Photo 91

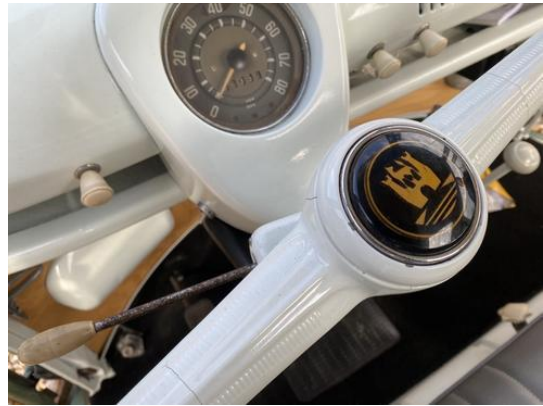


Photo 92



Photo 93



Photo 94



Photo 95



Photo 96



Photo 97



Photo 98



Photo 99



Photo 100



Photo 101

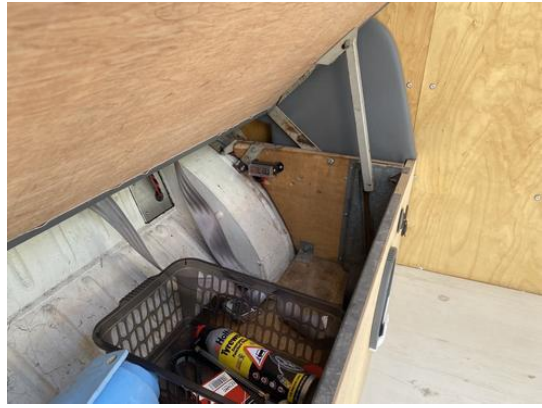


Photo 102



Photo 103



Photo 104



Photo 105



Photo 106



Photo 107



Photo 108



Photo 109



Photo 110



Photo 111



Photo 112



Photo 113



Photo 114



Photo 115

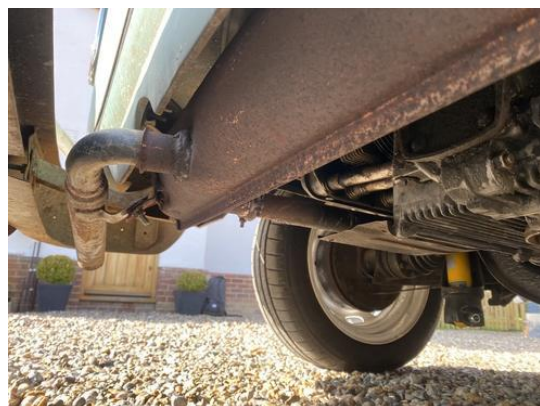


Photo 116

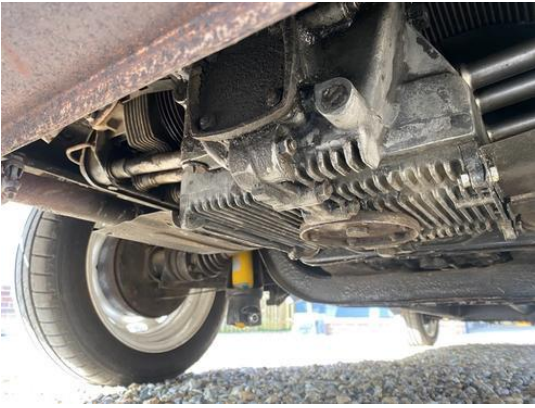


Photo 117

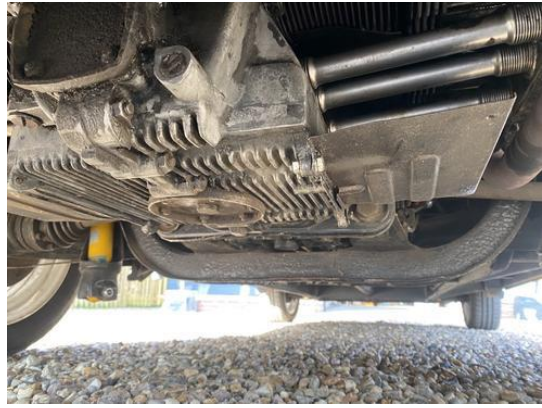


Photo 118

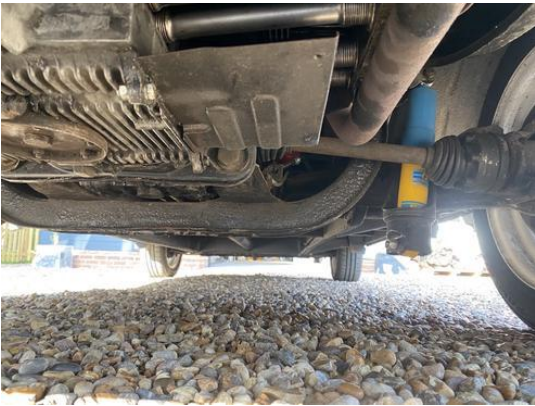


Photo 119



Photo 120



Photo 121



Photo 122



Photo 123



Photo 124



Photo 125



Photo 126



Photo 127



Photo 128



Photo 129



Photo 130



Photo 131



Photo 132



Photo 133

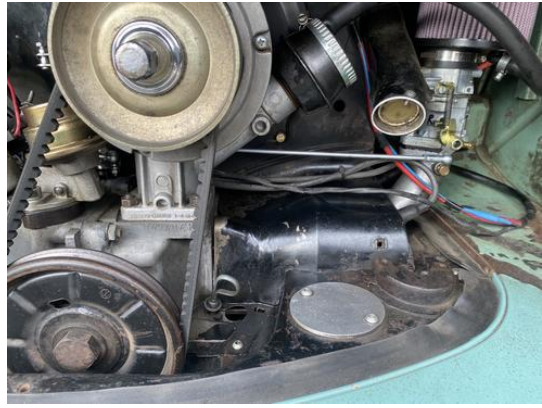


Photo 134



Photo 135



Photo 136



Photo 137



Photo 138



Photo 139



Photo 140



Photo 141



Photo 142



Photo 143

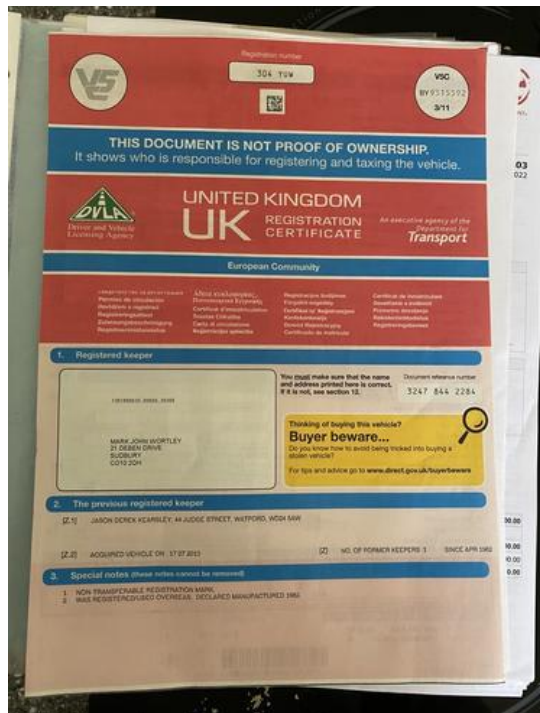


Photo 144

UK Registration Certificate

Vehicle details

Registration: 304 YUN

Date of first registration: 24 04 1962

Make: VOLKSWAGEN

Model: MOTOR CARAVAN

Registration: HISTORIC VEHICLE

Engine capacity: 1588 CC

Power: 52 kW

Body description: 2-AXLE RIGID BODY

Colour: BLUE/WHITE

Registration: 304 YUN

Doc No: 3047 844 2384

Doc Code: 130269820 / 00620 30

Photo 145

HERITAGE PARTS CENTRE

For Order 0001944449

Customer: 304 YUN

Vehicle: MOTOR CARAVAN

Quantity: 1

Price: £18.15

Total: £18.15

Parts not currently in stock will follow shortly

Photo 146

Stiftung AutoMuseum Volkswagen

Zertifikat

Kunde/Customers: Ian Hanley

Vehicle Identif.-No.: 921 876

Model/Model: 231, VW 50 Camper

Motor/Engine: 34 DIN-PS, 1.2 liter

Farbe/Colour: L.380 Turquoise

Gebaut am/built on: 27 March 1962

Angefertigt als Werkstoff/let factory on: 4 April 1962

Bestimmungsort/Location: Seattle, USA

Extrazusätze/Options: M 025 Mounting points for safety belts, M 169 88 Ah battery (EV), M 181 With chrome-plated wheel caps, M 195 Adjustable position bench seat/backrest, M 374 US-package

Datum/Date: 10 May 2011

Photo 147

GOLDSMITH UPHOLSTERY

MARK WORTLEY

£100 Pro I. Abbott

Date of Supply: 19.7.11

Quantity	Description	Price	Tax	Amount
	SEAT MADE FOR V.L.O.			370.00
	4100 DENIM FAIR			
Goods Total				370.00
VAT % Nil				
Invoice Total				370.00

Terms - 30days strictly net

Photo 148