



## Inspection Auto Gocarz Export

Gocarz France / Volkswagen Beetle / 217 UYO

Complete

Score	100 / 121 (82.65%)	Flagged items	3	Actions	0
<b>Site conducted</b>					Unanswered
<b>Réalisé le / Conducted on :</b>					18.10.2023 11:13 BST
<b>Nom de l'inspecteur / Inspector's name :</b>					Gocarz France
<b>Localisation / Location :</b>					(51.92174515041233, -2.1720164997954026)
<b>Immatriculation véhicule / Car registration # :</b>					217 UYO
<b>Marque &amp; Modèle de véhicule / Car's Make &amp; Model</b>					Volkswagen Beetle

## Flagged items

3 flagged

Carrosserie / Bodywork

**Le coffre souffre-t-il de déformations, réparations ou corrosion / Boot showing signs of deformations, repairs or corrosion ?**

Yes

Impact par le dessous entraînant une légère déformation. CF photos



Photo 82



Photo 83



Photo 84

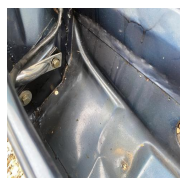


Photo 85



Photo 86

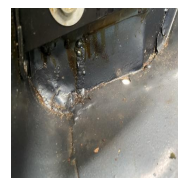


Photo 87

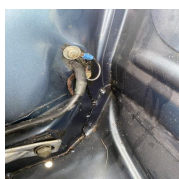


Photo 88



Photo 89



Photo 90



Photo 91

Soubassements, Chassis / Underbody

**Trace de fuite d'huile / Sign of oil leak?**

Visible

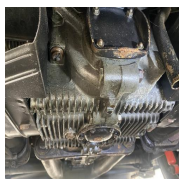


Photo 160

Mécanique / Mechanic

**Code(s) erreur trouvés / Fault code(s) found ?**

N/A

Condition de la carrosserie / Bodywork condition ?

Très bien / Very good

Le véhicule présente très bien dans son ensemble. Dans le détail nous relevons:

Baguette chrome côté conducteur non correctement fixé. Légère bulle de corrosion qui apparaît sous la baguette avg.

Joints d'encadrement en état moyen. CF photos.

Fixation essuie glace état moyen

Micro rayure arg



Photo 1



Photo 2



Photo 3



Photo 4



Photo 5



Photo 6



Photo 7

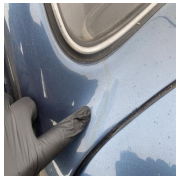


Photo 8



Photo 9

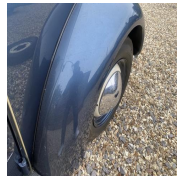


Photo 10



Photo 11



Photo 12



Photo 13

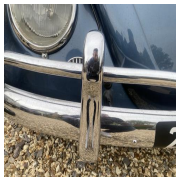


Photo 14



Photo 15

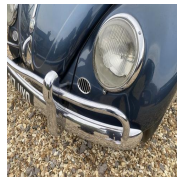


Photo 16



Photo 17



Photo 18

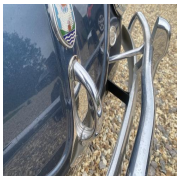


Photo 19



Photo 20



Photo 21



Photo 22



Photo 23

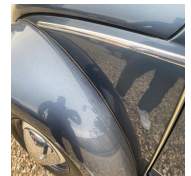


Photo 24



Photo 25

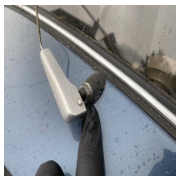


Photo 26

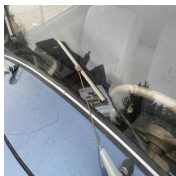


Photo 27

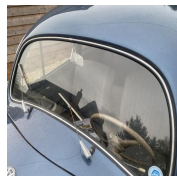


Photo 28



Photo 29



Photo 30

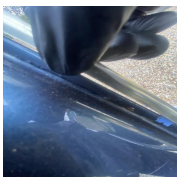


Photo 31



Photo 32



Photo 33

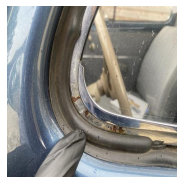


Photo 34

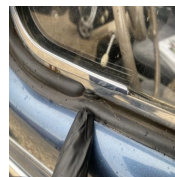


Photo 35

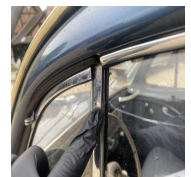


Photo 36





Photo 37

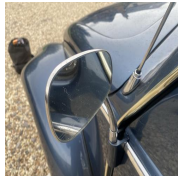


Photo 38



Photo 39



Photo 40

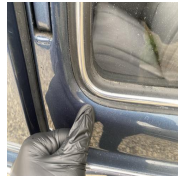


Photo 41



Photo 42



Photo 43

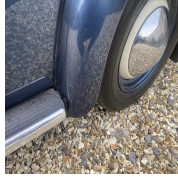


Photo 44



Photo 45



Photo 46

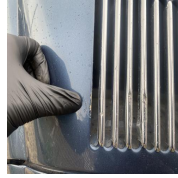


Photo 47

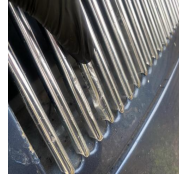


Photo 48



Photo 49



Photo 50



Photo 51



Photo 52



Photo 53

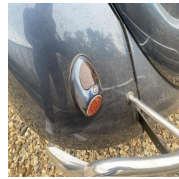


Photo 54

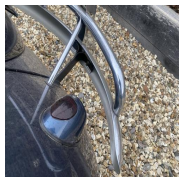


Photo 55

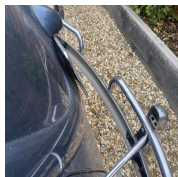


Photo 56



Photo 57



Photo 58



Photo 59

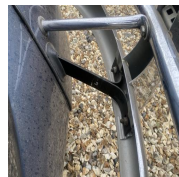


Photo 60

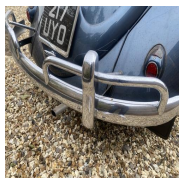


Photo 61



Photo 62

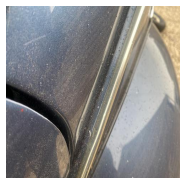


Photo 63

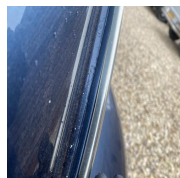


Photo 64



Photo 65



Photo 66



Photo 67



Photo 68

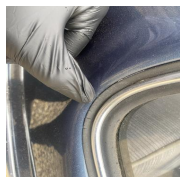


Photo 69



Photo 70



Photo 71

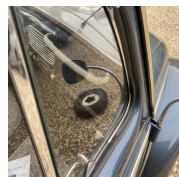


Photo 72



Photo 73

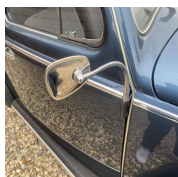


Photo 74



Photo 75



Photo 76

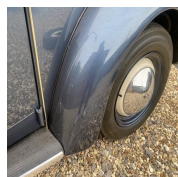


Photo 77

**Condition des Jantes / Rims condition ?**

Légère retouche peinture à prévoir.

Bien / Good



Photo 78



Photo 79



Photo 80



Photo 81

**Véhicule repeint / Resprayed vehicle ?**

Visible

Coulure détectée intérieur avg

**Qualité Peinture / Paint condition ?**

Très bien / Very good

**Trace d'accident / Sign of accident ?**

Non Visible

**Le coffre souffre-t-il de déformations, réparations ou corrosion / Boot showing signs of deformations, repairs or corrosion ?**

Yes

Impact par le dessous entraînant une légère déformation. CF photos



Photo 82



Photo 83



Photo 84



Photo 85



Photo 86



Photo 87



Photo 88



Photo 89



Photo 90

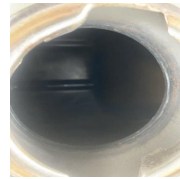


Photo 91

**Condition du toit ou de la capote / Roof condition (Convertible) ?**

Très bien / Very good



Photo 92



Photo 93



**Etat de l'intérieur / Interior condition ?**

**Très bien / Very good**

Les tissus nécessitent un nettoyage à l'injecteur extracteur .

Trace de main sur la feutrine montant de porte Avd.

Ciel de toit présentant une tache d'humidité (ancienne) côté droit



Photo 94



Photo 95



Photo 96



Photo 97



Photo 98

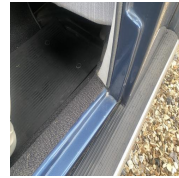


Photo 99

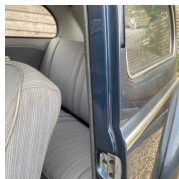


Photo 100

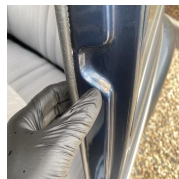


Photo 101

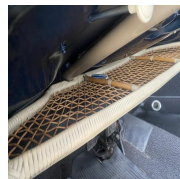


Photo 102



Photo 103



Photo 104

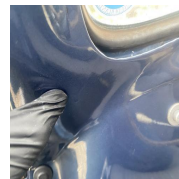


Photo 105



Photo 106

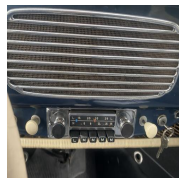


Photo 107

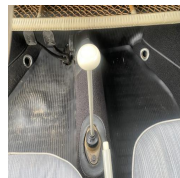


Photo 108

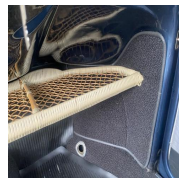


Photo 109



Photo 110



Photo 111



Photo 112



Photo 113



Photo 114

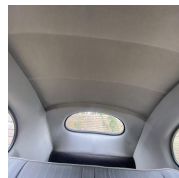


Photo 115

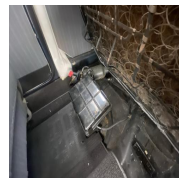


Photo 116



Photo 117

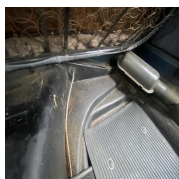


Photo 118

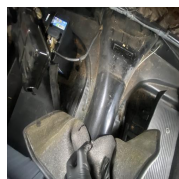


Photo 119



Photo 120



Photo 121

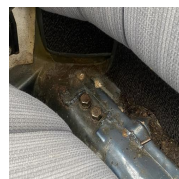


Photo 122



Photo 123



Photo 124



Photo 125



Photo 126



Photo 127



Photo 128

**Mileage (Miles)**

89245 KM

**Témoins allumés / Dashboard lights on ?**

N/A

**Klaxon fonctionnel / Horn working ?**

No

Se déclenche mais s'entend très peu.

<b>Fermeture centralisée fonctionnelle / Central locking working ?</b>	N/A
<b>Fenêtres fonctionnelles / Windows working ?</b>	Yes
<b>Rétroviseurs fonctionnels / Mirrors working ?</b>	Yes
<b>Unité centrale fonctionnelle / Head unit working ?</b>	N/A
<b>Essuis glace fonctionnels / Wipers working ?</b>	Yes
<b>Eclairage fonctionnel / All lights working ?</b>	N/A
Non testé - véhicule sans essence	
<b>Ouverture - Fermeture de toutes les portes / All doors opening - closing ?</b>	Yes
<b>Ceintures de sécurité fonctionnelles / Seatbelts fastening - unfastening ?</b>	Yes
<b>Parre-brise - fenêtres - rétroviseurs intacts / Windshield - windows - mirrors free from cracks ?</b>	Yes
<b>Toit ouvrant fonctionnel / Sunroof working ?</b>	N/A



Corrosion du châssis / Chassis corrosion ?

Très bien / Very good



Photo 129

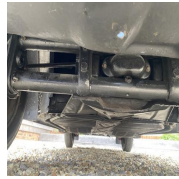


Photo 130



Photo 131



Photo 132



Photo 133



Photo 134



Photo 135



Photo 136



Photo 137

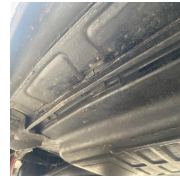


Photo 138



Photo 139



Photo 140



Photo 141



Photo 142



Photo 143



Photo 144

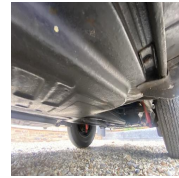


Photo 145

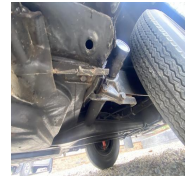


Photo 146



Photo 147

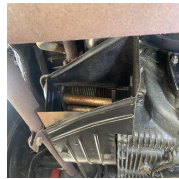


Photo 148

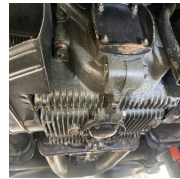


Photo 149



Photo 150

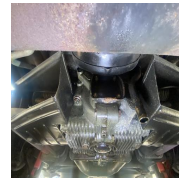


Photo 151

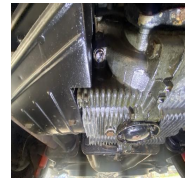


Photo 152

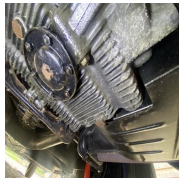


Photo 153

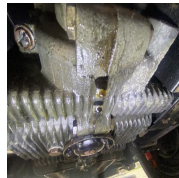


Photo 154

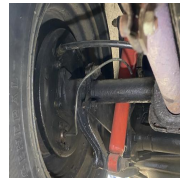


Photo 155



Photo 156



Photo 157



Photo 158



Photo 159

Trace de fuite d'huile / Sign of oil leak?

Visible

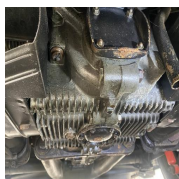


Photo 160

Possibilité d'utiliser un pont ou une fosse

No



**Corrosion / Rust**

3 / 3 (100%)

**Etat general du véhicule sur la corrosion / General rust condition ?**

Très bien / Very good

**Détails localisation corrosion / Rust location details**

Chassis / Basement

A l'avant endroit impact et sur l'échappement (surface et non perforante)

**Consommables & Fluides / Consumables & Fluids**

36 / 36 (100%)

**Roue de secours - galette en bon état / Spare wheel in good condition ?**

Yes

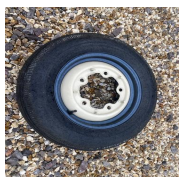


Photo 161

**Etat des pneus avant / Front tyres condition :**

OK

**Pneus avant identiques / Front matching tyres ?**

Yes

**Etat des pneus arrière / Rear tyres condition :**

OK

**Pneus arrières identiques / Rear matching tyres ?**

Yes

**Freins avant / Front brakes**

OK

**Freins arrière / Rear brakes**

OK

**Liquide de frein / Brake fluid**

N/A

**Etat des courroies / Belts condition (timing & auxiliary):**

OK

**Huile moteur (état - niveau) / Engine oil (condition - level)**

OK

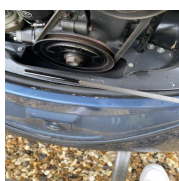


Photo 162

**Liquide de refroidissement (état - niveau) / Coolant (condition - level)**

N/A

**Huile de BV (état - niveau) / Gearbox oil (condition - level)**

N/A

Baie moteur accessible / Engine bay accessible ?

Yes

Etat général baie moteur / General condition engine bay ?

Très bien / Very good



Photo 163



Photo 164

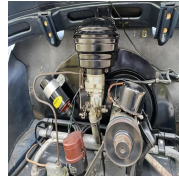


Photo 165



Photo 166



Photo 167

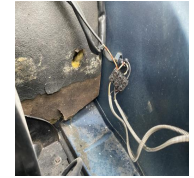


Photo 168

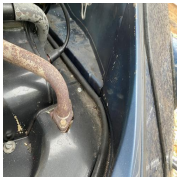


Photo 169



Photo 170

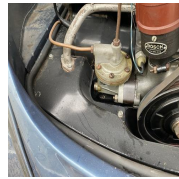


Photo 171



Photo 172

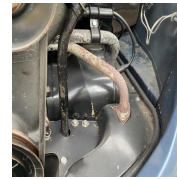


Photo 173



Photo 174



Photo 175

Vidéo moteur tournant / Video running engine (cold & warm)

Non Transmis

Vidéo gaz d'échappement / Video exhaust gas

Non Transmis

Code(s) erreur trouvés / Fault code(s) found ?

N/A

Essai routier / Test drive

0 / 1 (0%)

Véhicule roulant / Car running ?

No

Réservoir d'essence vide.

Essai routier effectué par l'inspecteur? / Car test driven by inspector personally?

No

Conditions

Moteur / Engine (Bruits , vibrations, fumées / Noises, vibrations, smoke) :

OK

Transmission (Bruits , vibrations, fumées / Noises, vibrations, smoke) :

N/A

Suspensions (Condition) :

N/A



Ressenti direction / Steering wheel abnormal sensations ?

N/A

**Conditions véhicule de collection / Classic cars Regulation**

3 / 3 (100%)

**Agé d'au moins 30 ans / More than 30 years old car**

Yes

**Correspondre à un modèle ou à un type dont la production a cessé / Car currently not produced**

Yes

**Se trouver dans leur état d'origine sans modifications substantielles du châssis de la carrosserie, du système de direction, de freinage, de transmission, ou de suspension ni du moteur / Car is conformed to original production without any substantial modification of bodywork, transmission, breaks, gearbox, suspension, engine.**

Yes

**Administratif**

5 / 9 (55.56%)

**Nombre de clefs / Number of keys ?**

1

**Toutes les clefs fonctionnelles / All keys working ?**

Yes

**Ecrou antivol présent / Locking nut available ?**

N/A

**HPI check (base de donnée des assurances) :**

N/A

Cat D signifie que le coût des réparations des dommages subits est inférieur au prix argus du véhicule, Cat C le coût des réparations dépasse le prix argus, Cat B le véhicule peut être vendu en pièces détachées uniquement et enfin Cat A, le véhicule ne peut être que détruit.

**Correspondance VIN / Matching VIN (chassis, V5, pare-brise / windshield) :**

Yes



Photo 176



Photo 177



Photo 178

**V5 disponible / Available V5 ?**

Yes

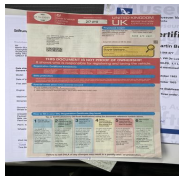


Photo 179

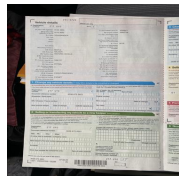


Photo 180

**Date du dernier CT / Last MOT Test date ?**

Non Concerné

**Carnet d'entretien et-ou factures vérifiés / Service book and-or invoices checked ?**

Présence Carnet



Photo 181



Photo 182

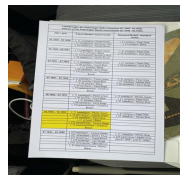


Photo 183

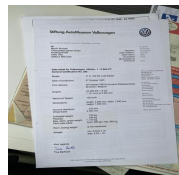


Photo 184



Photo 185

Clément  
18.10.2023 18:19 BST



## Media summary



Photo 1



Photo 2



Photo 3



Photo 4



Photo 5



Photo 6





Photo 7



Photo 8



Photo 9



Photo 10



Photo 11



Photo 12





Photo 13



Photo 14



Photo 15



Photo 16



Photo 17



Photo 18



Photo 19



Photo 20





Photo 21



Photo 22



Photo 23



Photo 24



Photo 25



Photo 26



Photo 27



Photo 28



Photo 29



Photo 30



Photo 31



Photo 32





Photo 33



Photo 34



Photo 35



Photo 36



Photo 37



Photo 38



Photo 39



Photo 40





Photo 41



Photo 42



Photo 43



Photo 44



Photo 45



Photo 46



Photo 47



Photo 48





Photo 49



Photo 50



Photo 51



Photo 52



Photo 53



Photo 54



Photo 55



Photo 56





Photo 57



Photo 58



Photo 59



Photo 60



Photo 61



Photo 62



Photo 63



Photo 64





Photo 65



Photo 66



Photo 67



Photo 68



Photo 69



Photo 70





Photo 71



Photo 72



Photo 73



Photo 74



Photo 75



Photo 76



Photo 77



Photo 78





Photo 79



Photo 80



Photo 81



Photo 82



Photo 83



Photo 84



Photo 85



Photo 86



Photo 87

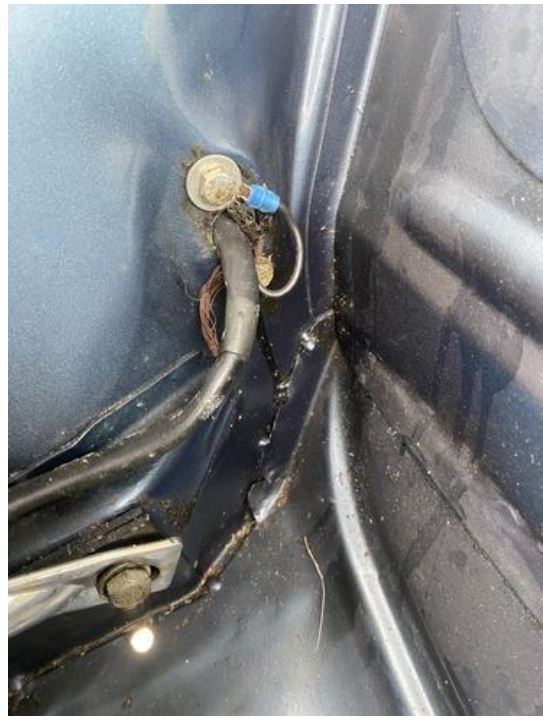


Photo 88



Photo 89



Photo 90





Photo 91



Photo 92



Photo 93



Photo 94



Photo 95



Photo 96





Photo 97



Photo 98



Photo 99



Photo 100



Photo 101



Photo 102



Photo 103



Photo 104





Photo 105



Photo 106



Photo 107



Photo 108



Photo 109



Photo 110



Photo 111



Photo 112





Photo 113



Photo 114



Photo 115



Photo 116



Photo 117



Photo 118





Photo 119



Photo 120



Photo 121



Photo 122



Photo 123



Photo 124



Photo 125



Photo 126



Photo 127



Photo 128



Photo 129



Photo 130





Photo 131



Photo 132



Photo 133



Photo 134



Photo 135



Photo 136



Photo 137



Photo 138





Photo 139



Photo 140



Photo 141



Photo 142



Photo 143



Photo 144



Photo 145



Photo 146





Photo 147



Photo 148



Photo 149



Photo 150



Photo 151



Photo 152



Photo 153



Photo 154





Photo 155



Photo 156



Photo 157



Photo 158



Photo 159



Photo 160





Photo 161



Photo 162



Photo 163



Photo 164



Photo 165



Photo 166



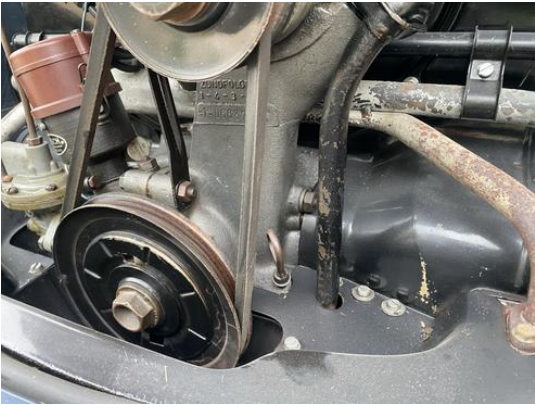


Photo 167



Photo 168



Photo 169



Photo 170



Photo 171



Photo 172

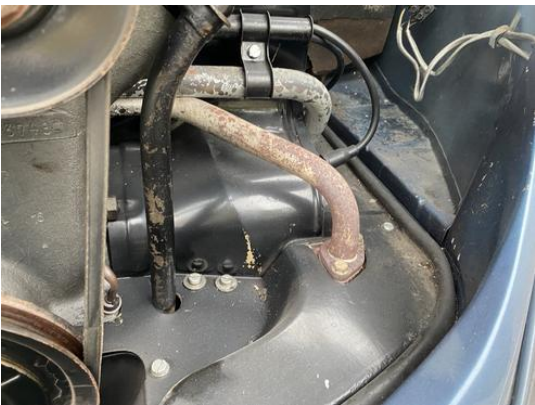


Photo 173



Photo 174





Photo 175



Photo 176



Photo 177



Photo 178



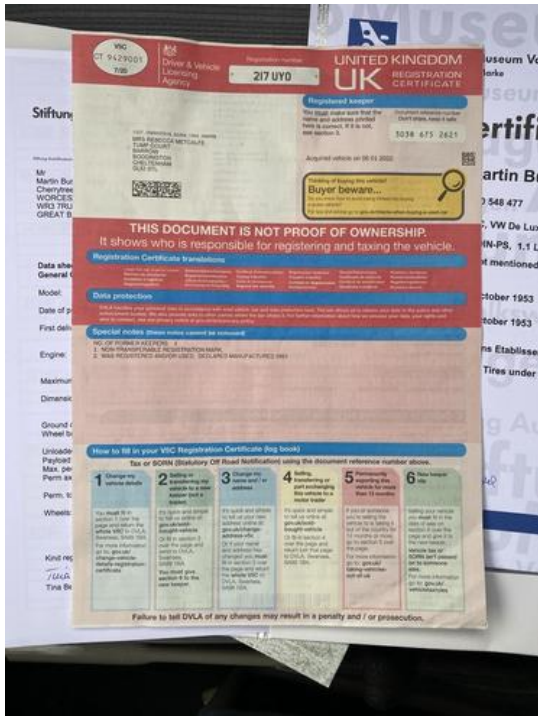


Photo 179

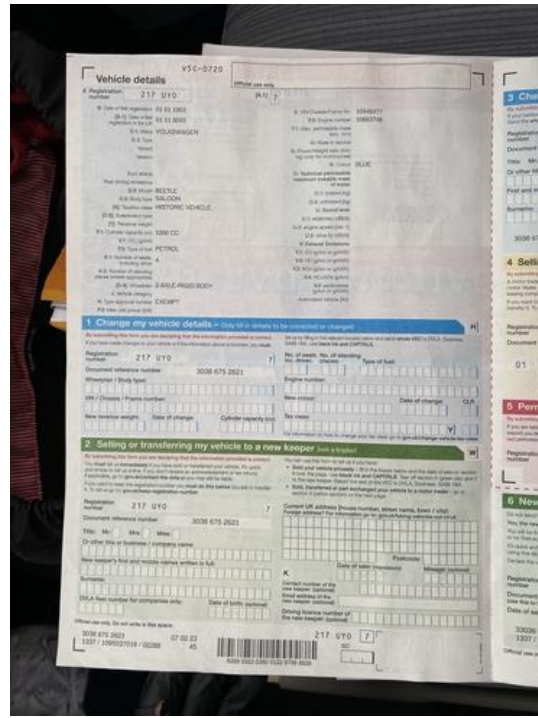


Photo 180

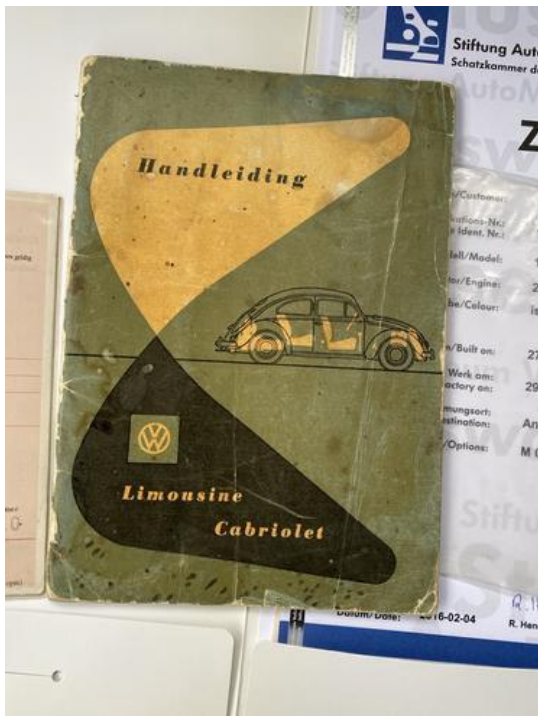


Photo 181

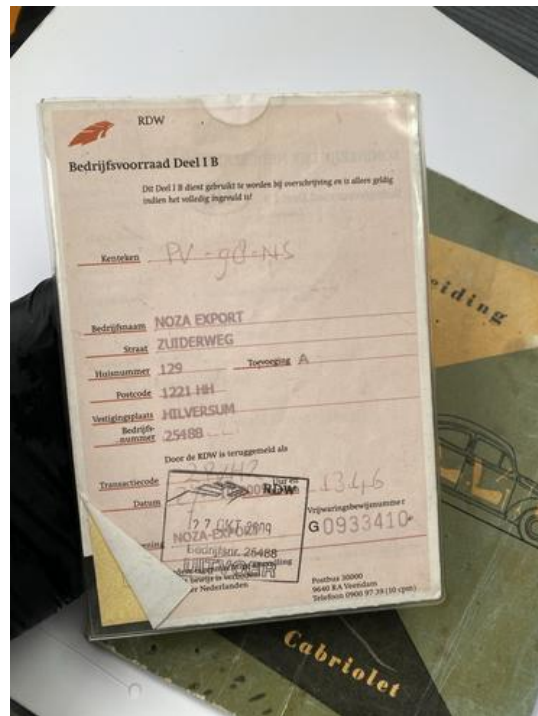


Photo 182

Leckierungen der Volkswagen Käfer Limousine (07.1949 - 02.1955)  
 Colours of the Volkswagen Beetle saloon/sedan (07.1949 - 02.1955)

Jahr / year	Export-Modell / export-model	Standard-Modell / standard-model
07.1949 - 05.1950	L 11 pastellgrün / Pastel Green	L 21 perlgrau / Pearl Grey
	L 91 dunkelbraun / Dark Brown	L 41 schwarz / Black
	L 79 mittelbraun / Middle Brown	
05.1950 - 04.1951	L 11 pastellgrün / Pastel Green	L 21 perlgrau / Pearl Grey
	L 41 schwarz / Black	L 32 dunkelblau / Dark Blue
	L 51 dunkelbraun / Dark Brown	L 78 mittelbraun / Middle Brown
04.1951 - 07.1951	L 11 pastellgrün / Pastel Green	L 21 perlgrau / Pearl Grey
	L 30 azurblau / Azure Blue	L 32 dunkelblau / Dark Blue
	L 90 sandfarbe / Sand Beige	
	L 73 kastanienbraun / Chestnut Brown	
07.1951 - 09.1952	L 11 pastellgrün / Pastel Green	L 21 perlgrau / Pearl Grey
	L 30 azurblau / Azure Blue	L 37 mittelblau / Middle Blue
	L 41 schwarz / Black	L 90 sandfarbe / Sand Beige
	L 73 kastanienbraun / Chestnut Brown	
10.1952 - 03.1953	L 11 pastellgrün / Pastel Green	L 13 mittelgrün / Middle Green
	L 30 azurblau / Azure Blue	L 21 perlgrau / Pearl Grey
	L 41 schwarz / Black	L 37 mittelblau / Middle Blue
	L 90 sandfarbe / Sand Beige	
03.1953 - 12.1953	L 11 pastellgrün / Pastel Green	L 21 perlgrau / Pearl Grey
	L 19 hellgrün / Light Green	L 37 mittelblau / Middle Blue
	L 35 mittelblau / Middle Blue	
	L 41 schwarz / Black	
01.1954 - 02.1955	L 213 islandgrün / Iceland Green	L 37 mittelblau / Middle Blue
	L 221 smaragdgrün / Emerald Green	L 225 jungfergrau / Juniper Grey
	L 271 weinrotbraun / Texas Brown	(See 07.1956 / until 07.1958)
	L 275 schilfbraun / Light Beige	
	L 276 ultramarin / Ultra Maroon	
L 41 ebendunkelgrün / Ebony Black		

Photo 183

Stiftung AutoMuseum Volkswagen

Volkswagen-Modell: Volkswagen - Standard 01 - 0808 (04/1953 - 02/1955)

M: Martin Bunyan  
 Chempness Dames Green  
 WORCESTER  
 WR3 7BU  
 GREAT BRITAIN

11 C, VW De Luxe Sedan  
 General Certification No. 392

Date of production: 27 October 1953  
 First delivery: 29 October 1953 to Anciens Etablissements, Brussels / Belgium  
 Engine: 25 DIN-PS / 18 kW  
 1.131 cm<sup>3</sup> at 3.300 rpm  
 Maximum Speed: 100 km/h  
 Dimensions: length 4.050 mm, width 1.540 mm, height 1.550 mm  
 Ground clearance: 212 mm  
 Wheel base: 2.400 mm  
 Unloaded weight: 730 kg  
 380 kg  
 Payload: 1.110 kg  
 Max. perm. gross weight: front 450 kg / rear 600 kg  
 Perm. axle loads: is not mentioned  
 Perm. towing weight: is not mentioned  
 Wheels: rim: 3.00 D x 16  
 tires: 5.00 - 16

Kind regards  
 Tina Berthold

Photo 184

Stiftung AutoMuseum Volkswagen  
 Schatzkammer der Marke

**Zertifikat**

Kunde/Customer: Martin Bunyan  
 Fahrzeug-Identifikations-Nr./ Vehicle Ident. No.: 1 - 0 548 477  
 Modell/Model: 11 C, VW De Luxe Sedan  
 Motor/Engine: 25 DIN-PS, 1,1 Liter  
 Farbe/Colour: Is not mentioned

Gebaut am/Built on: 27 October 1953  
 Ausgeliefert ab Werk am: / Left factory on: 29 October 1953

Bestimmungsart/ Country of destination: Anciens Etablissements, Brussels / Belgium  
 Extras/Options: M 042 Tires under costumes seal

Datum/Date: 2016-02-04  
 R. Heidel  
 T. Berthold

Photo 185