



Inspection Auto Gocarz Export

Gocarz France / LR Defender / F430 FGK

Complete

Score	103 / 122 (84.43%)	Flagged items	2	Actions	0
--------------	--------------------	----------------------	---	----------------	---

Site conducted Unanswered

Réalisé le / Conducted on : 23.10.2023 10:14 BST

Nom de l'inspecteur / Inspector's name : Gocarz France

Localisation / Location : 23 Julius Caesar Way
Stanmore
Angleterre
HA7 4PZ
Royaume-Uni
(51.623298801097285,
-0.2977598697920937)

Immatriculation véhicule / Car registration # : F430 FGK

Marque & Modèle de véhicule / Car's Make & Model LR Defender

Flagged items

2 flagged

Soubassements, Chassis / Underbody

Trace de fuite d'huile / Sign of oil leak?

Possible

Possible fuite légère boîte de transfert et bas moteur

Mécanique / Mechanic

Code(s) erreur trouvés / Fault code(s) found ?

N/A

Condition de la carrosserie / Bodywork condition ?

Moyen / Medium

Sur ce véhicule on remarque :

Ensemble des joints secs / craquelés.

Nombreuses bulles de corrosion

Léger défaut d'alignement du capot Avd



Photo 1



Photo 2



Photo 3



Photo 4



Photo 5

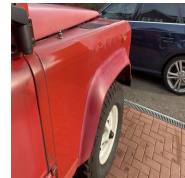


Photo 6

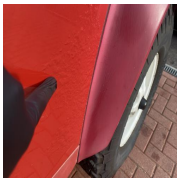


Photo 7

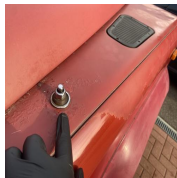


Photo 8



Photo 9

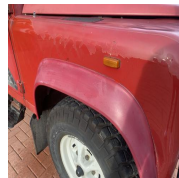


Photo 10

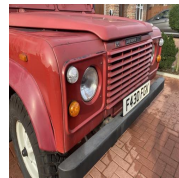


Photo 11



Photo 12

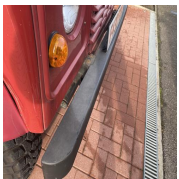


Photo 13



Photo 14

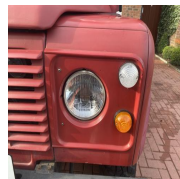


Photo 15



Photo 16

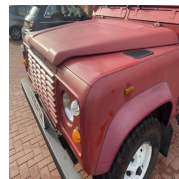


Photo 17



Photo 18



Photo 19

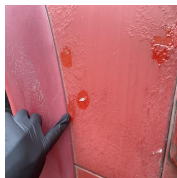


Photo 20

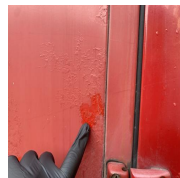


Photo 21

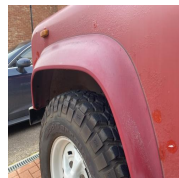


Photo 22

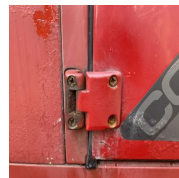


Photo 23

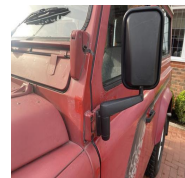


Photo 24



Photo 25



Photo 26



Photo 27

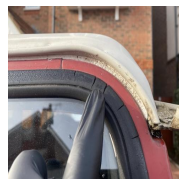


Photo 28

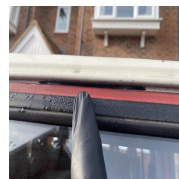


Photo 29

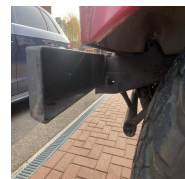


Photo 30



Photo 31

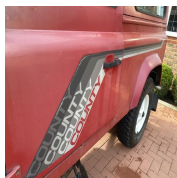


Photo 32



Photo 33



Photo 34

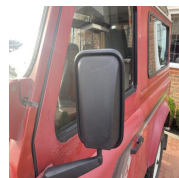


Photo 35



Photo 36



Photo 37



Photo 38



Photo 39



Photo 40



Photo 41



Photo 42



Photo 43



Photo 44



Photo 45



Photo 46

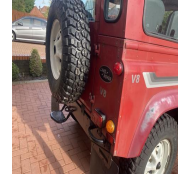


Photo 47

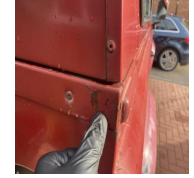


Photo 48



Photo 49



Photo 50



Photo 51



Photo 52



Photo 53



Photo 54



Photo 55



Photo 56



Photo 57

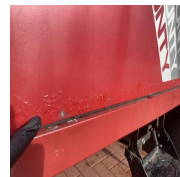


Photo 58

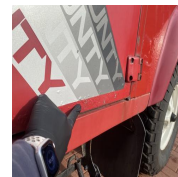


Photo 59

Condition des Jantes / Rims condition ?

Bien / Good

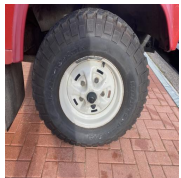


Photo 60

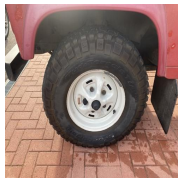


Photo 61



Photo 62

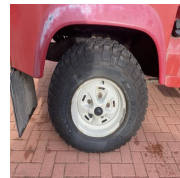


Photo 63

Véhicule repeint / Resprayed vehicle ?

Non visible

Qualité Peinture / Paint condition ?

Mauvais / Bad

Trace d'accident / Sign of accident ?

Non Visible

Le coffre souffre-t-il de déformations, réparations ou corrosion / Boot showing signs of deformations, repairs or corrosion ?

No

Condition du toit ou de la capote / Roof condition (Convertible) ?

Bien / Good



Photo 64



Photo 65



Photo 66



Photo 67

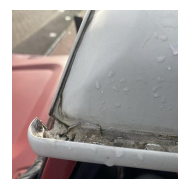


Photo 68



Photo 69



Photo 70



Photo 71



Photo 72



Photo 73



Photo 74

Etat de l'intérieur / Interior condition ?

Très bien / Very good



Photo 75



Photo 76



Photo 77

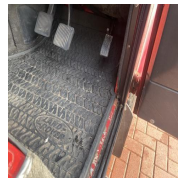


Photo 78



Photo 79



Photo 80



Photo 81



Photo 82



Photo 83



Photo 84



Photo 85

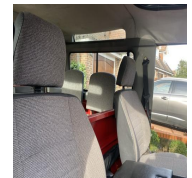


Photo 86

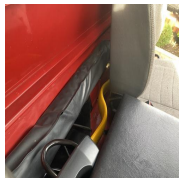


Photo 87



Photo 88



Photo 89



Photo 90



Photo 91

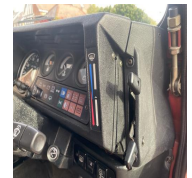


Photo 92



Photo 93



Photo 94

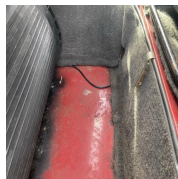


Photo 95



Photo 96

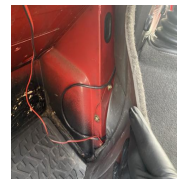


Photo 97

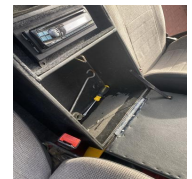


Photo 98

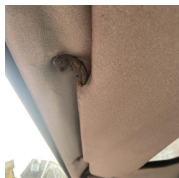


Photo 99



Photo 100

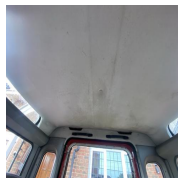


Photo 101

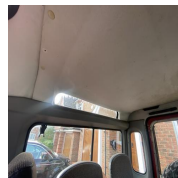


Photo 102



Photo 103



Photo 104



Photo 105



Photo 106

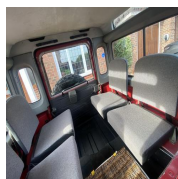


Photo 107



Photo 108

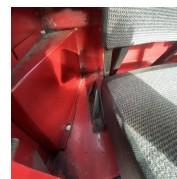


Photo 109



Photo 110



Photo 111

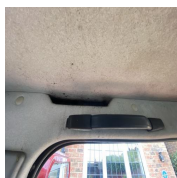


Photo 112

Mileage (Miles)

17057

Attention changement de compteur à 133.000 miles



Photo 113

Témoins allumés / Dashboard lights on ?	No
Klaxon fonctionnel / Horn working ?	Yes
Fermeture centralisée fonctionnelle / Central locking working ?	N/A
Fenêtres fonctionnelles / Windows working ?	Yes
Rétroviseurs fonctionnels / Mirrors working ?	Yes
Unité centrale fonctionnelle / Head unit working ?	N/A
Essuis glace fonctionnels / Wipers working ?	Yes
Eclairage fonctionnel / All lights working ?	No
Warning ne fonctionne pas - Feux de route ne fonctionnent pas	
Ouverture - Fermeture de toutes les portes / All doors opening - closing ?	Yes
Ceintures de sécurité fonctionnelles / Seatbelts fastening - unfastening ?	Yes
Parre-brise - fenêtres - rétroviseurs intacts / Windshield - windows - mirrors free from cracks ?	Yes
Toit ouvrant fonctionnel / Sunroof working ?	Yes

Corrosion du châssis / Chassis corrosion ?

Bien / Good



Photo 114



Photo 115

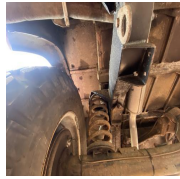


Photo 116

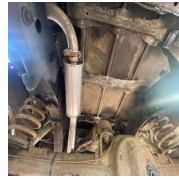


Photo 117

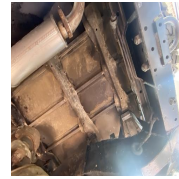


Photo 118

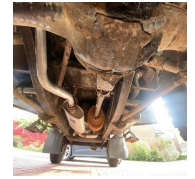


Photo 119



Photo 120



Photo 121

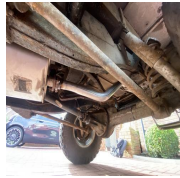


Photo 122

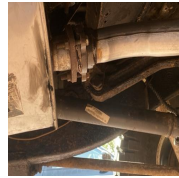


Photo 123

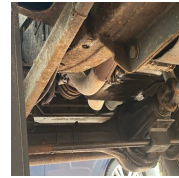


Photo 124



Photo 125

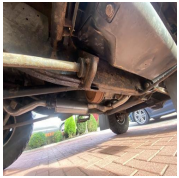


Photo 126

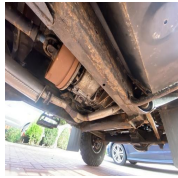


Photo 127



Photo 128

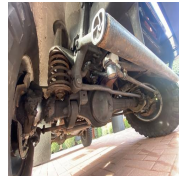


Photo 129



Photo 130



Photo 131



Photo 132



Photo 133

Trace de fuite d'huile / Sign of oil leak?

Possible

Possible fuite légère boîte de transfert et bas moteur

Possibilité d'utiliser un pont ou une fosse

No

Corrosion / Rust

1 / 3 (33.33%)

Etat general du véhicule sur la corrosion / General rust condition ?

Moyen / Medium

Détails localisation corrosion / Rust location details

Carrosserie / Bodywork

Chassis / Basement

Consommables & Fluides / Consumables & Fluids

36 / 36 (100%)

Roue de secours - galette en bon état / Spare wheel in good condition ?

Yes

Etat des pneus avant / Front tyres condition :

OK

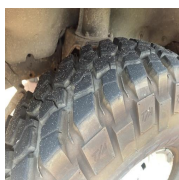


Photo 134

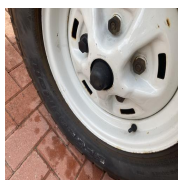


Photo 135

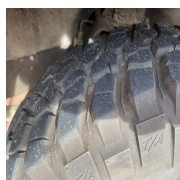


Photo 136

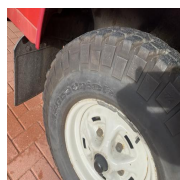


Photo 137

Pneus avant identiques / Front matching tyres ?

Yes

Etat des pneus arrière / Rear tyres condition :

OK

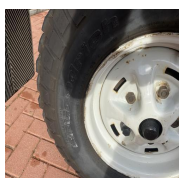


Photo 138



Photo 139

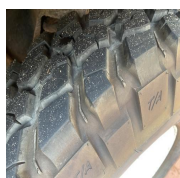


Photo 140



Photo 141

Pneus arrières identiques / Rear matching tyres ?

Yes

Freins avant / Front brakes

OK

Freins arrière / Rear brakes

OK

Liquide de frein / Brake fluid

OK

Etat des courroies / Belts condition (timing & auxiliary):

OK

Huile moteur (état - niveau) / Engine oil (condition - level)

OK

Liquide de refroidissement (état - niveau) / Coolant (condition - level)

OK

Huile de BV (état - niveau) / Gearbox oil (condition - level)

N/A

Mécanique / Mechanic

1 flagged, 24 / 28 (85.71%)

Baie moteur accessible / Engine bay accessible ?

Yes

Etat général baie moteur / General condition engine bay ?

Bien / Good

Aucune fuite récente visible - Bon état des courroies -



Photo 142



Photo 143



Photo 144

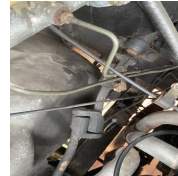


Photo 145



Photo 146

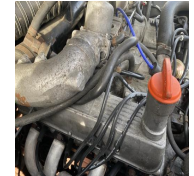


Photo 147

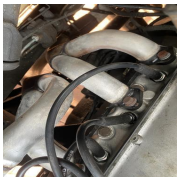


Photo 148

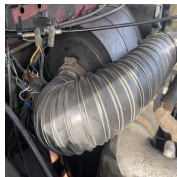


Photo 149

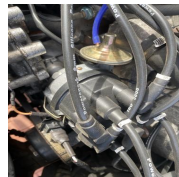


Photo 150



Photo 151

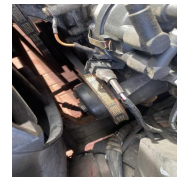


Photo 152



Photo 153

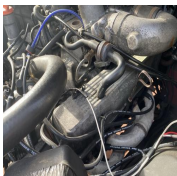


Photo 154

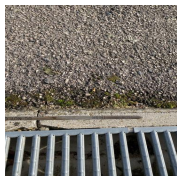


Photo 155

Vidéo moteur tournant / Video running engine (cold & warm)

Transmis par WhatsApp

Vidéo gaz d'échappement / Video exhaust gas

Transmis par WhatsApp

Code(s) erreur trouvés / Fault code(s) found ?

N/A

Essai routier / Test drive

1 / 1 (100%)

Véhicule roulant / Car running ?

Yes

Essai routier effectué par l'inspecteur? / Car test driven by inspector personally?

Yes

Conditions

sec / dry

ville / town roads

10 - 15 min

Moteur / Engine (Bruits , vibrations, fumées / Noises, vibrations, smoke) :

OK

Transmission (Bruits , vibrations, fumées / Noises, vibrations, smoke) :

OK

Suspensions (Condition) :

OK

Ressenti direction / Steering wheel abnormal sensations ?

Safe

Conditions véhicule de collection / Classic cars Regulation

3 / 3 (100%)

Agé d'au moins 30 ans / More than 30 years old car

Yes

Correspondre à un modèle ou à un type dont la production a cessé / Car currently not produced

Yes

Se trouver dans leur état d'origine sans modifications substantielles du châssis de la carrosserie, du système de direction, de freinage, de transmission, ou de suspension ni du moteur / Car is conformed to original production without any substantial modification of bodywork, transmission, breaks, gearbox, suspension, engine.

Yes

Administratif

8 / 9 (88.89%)

Nombre de clefs / Number of keys ?

2

Toutes les clefs fonctionnelles / All keys working ?

Yes

Ecrou antivol présent / Locking nut available ?

N/A

HPI check (base de donnée des assurances) :

N/A

Cat D signifie que le coût des réparations des dommages subits est inférieur au prix argus du véhicule, Cat C le coût des réparations dépasse le prix argus, Cat B le véhicule peut être vendu en pièces détachées uniquement et enfin Cat A, le véhicule ne peut être que détruit.

Correspondance VIN / Matching VIN (chassis, V5, pare-brise / windshield) :

Yes



Photo 156

V5 disponible / Available V5 ?

Yes

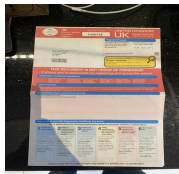


Photo 157

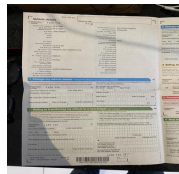


Photo 158

Date du dernier CT / Last MOT Test date ?

Plus de 6 mois (6months+)

Carnet d'entretien et-ou factures vérifiés / Service book and-or invoices checked ?

Présence Carnet + Factures (complètes)

Clement
23.10.2023 19:21 BST

Media summary



Photo 1



Photo 2



Photo 3



Photo 4



Photo 5



Photo 6



Photo 7



Photo 8



Photo 9



Photo 10



Photo 11



Photo 12



Photo 13



Photo 14



Photo 15



Photo 16



Photo 17



Photo 18



Photo 19



Photo 20



Photo 21



Photo 22



Photo 23



Photo 24



Photo 25



Photo 26



Photo 27



Photo 28



Photo 29



Photo 30



Photo 31



Photo 32



Photo 33



Photo 34



Photo 35



Photo 36



Photo 37



Photo 38



Photo 39



Photo 40



Photo 41



Photo 42



Photo 43



Photo 44



Photo 45



Photo 46



Photo 47



Photo 48



Photo 49



Photo 50



Photo 51



Photo 52



Photo 53



Photo 54



Photo 55



Photo 56



Photo 57



Photo 58



Photo 59



Photo 60



Photo 61



Photo 62



Photo 63



Photo 64



Photo 65



Photo 66



Photo 67



Photo 68



Photo 69



Photo 70



Photo 71



Photo 72



Photo 73



Photo 74



Photo 75



Photo 76



Photo 77



Photo 78



Photo 79



Photo 80



Photo 81



Photo 82



Photo 83



Photo 84



Photo 85



Photo 86

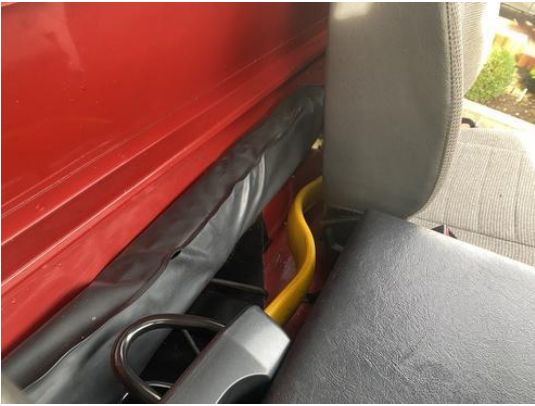


Photo 87



Photo 88



Photo 89



Photo 90



Photo 91



Photo 92



Photo 93



Photo 94



Photo 95



Photo 96



Photo 97



Photo 98



Photo 99



Photo 100



Photo 101



Photo 102



Photo 103



Photo 104



Photo 105



Photo 106



Photo 107



Photo 108



Photo 109



Photo 110



Photo 111



Photo 112



Photo 113



Photo 114



Photo 115

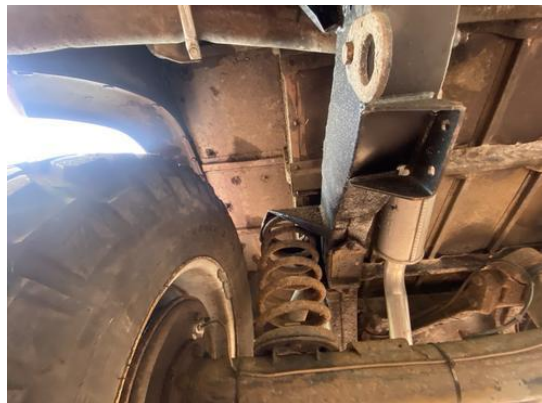


Photo 116



Photo 117



Photo 118



Photo 119



Photo 120



Photo 121



Photo 122



Photo 123



Photo 124



Photo 125



Photo 126



Photo 127



Photo 128



Photo 129



Photo 130



Photo 131



Photo 132



Photo 133



Photo 134



Photo 135



Photo 136



Photo 137



Photo 138



Photo 139



Photo 140



Photo 141



Photo 142



Photo 143



Photo 144



Photo 145



Photo 146



Photo 147



Photo 148



Photo 149



Photo 150



Photo 151



Photo 152



Photo 153



Photo 154



Photo 155



Photo 156

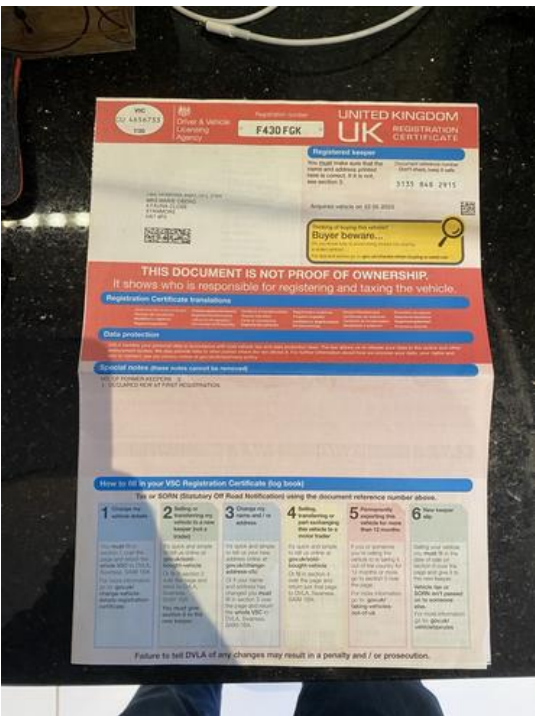


Photo 157

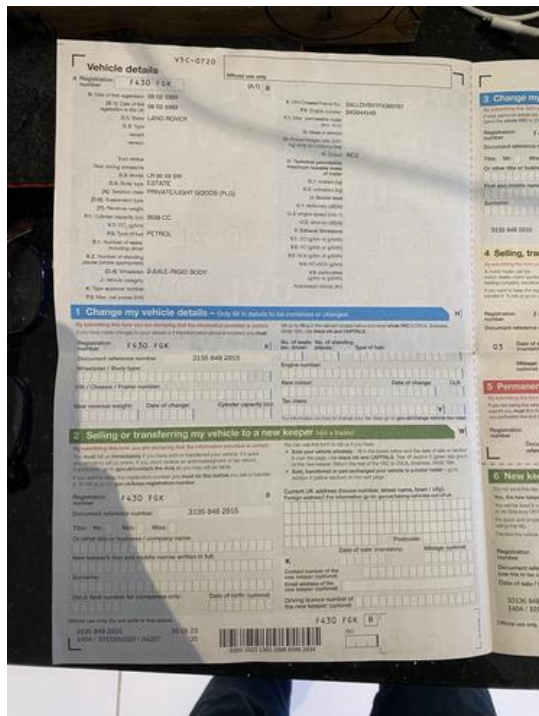


Photo 158