



Inspection Auto Gocarz Export

Gocarz France / Buick Skylark / MUX
522F

Complete

Score	101 / 122 (82.79%)	Flagged items	1	Actions	0
--------------	--------------------	----------------------	---	----------------	---

Site conducted Unanswered

Réalisé le / Conducted on : 11.05.2023 10:41 BST

Nom de l'inspecteur / Inspector's name : Gocarz France

Localisation / Location : Former Southridge Farm,
Highwood Road
Chelmsford
Angleterre
CM1 3PX
Royaume-Uni
(51.71670237930669,
0.3911705603542995)

Immatriculation véhicule / Car registration # : MUX 522F

Marque & Modèle de véhicule / Car's Make & Model Buick Skylark

Flagged items

1 flagged

Mécanique / Mechanic

Code(s) erreur trouvés / Fault code(s) found ?

N/A

Condition de la carrosserie / Bodywork condition ?

Bien / Good

Le véhicule présente bien mais dans le détail on note :

- Chrome piqué à certains endroits
- Feu arrG cassé
- Leger défaut alignement capot



Photo 1



Photo 2



Photo 3



Photo 4



Photo 5



Photo 6



Photo 7

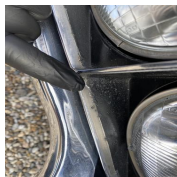


Photo 8



Photo 9

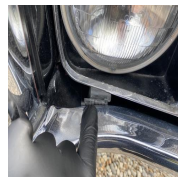


Photo 10

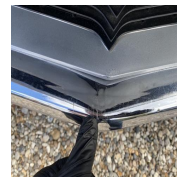


Photo 11



Photo 12



Photo 13



Photo 14



Photo 15



Photo 16



Photo 17



Photo 18



Photo 19

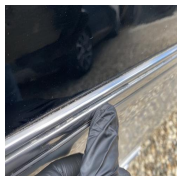


Photo 20



Photo 21



Photo 22



Photo 23



Photo 24

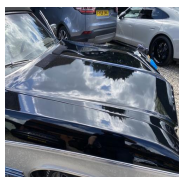


Photo 25

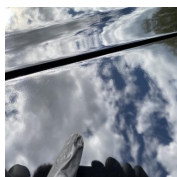


Photo 26

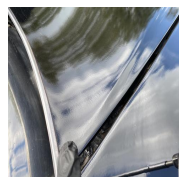


Photo 27

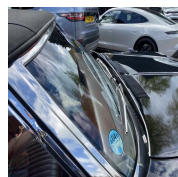


Photo 28

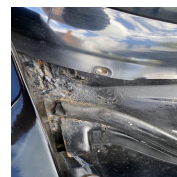


Photo 29

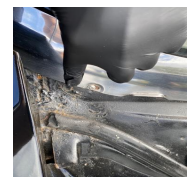


Photo 30

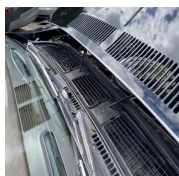


Photo 31

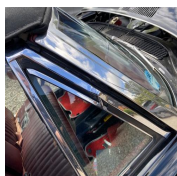


Photo 32

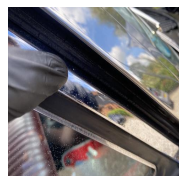


Photo 33

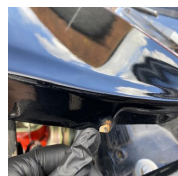


Photo 34



Photo 35



Photo 36



Photo 37



Photo 38

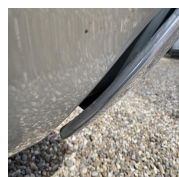


Photo 39



Photo 40



Photo 41



Photo 42



Photo 43



Photo 44



Photo 45



Photo 46



Photo 47



Photo 48



Photo 49



Photo 50

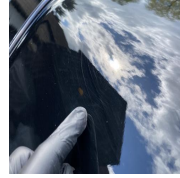


Photo 51



Photo 52



Photo 53

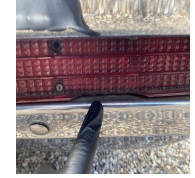


Photo 54



Photo 55

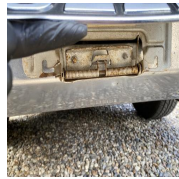


Photo 56



Photo 57



Photo 58

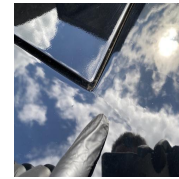


Photo 59



Photo 60



Photo 61



Photo 62



Photo 63



Photo 64



Photo 65



Photo 66



Photo 67



Photo 68

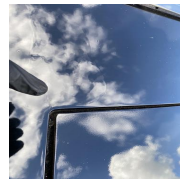


Photo 69



Photo 70



Photo 71



Photo 72

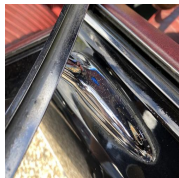


Photo 73

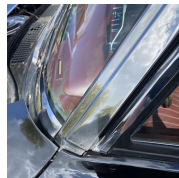


Photo 74

Condition des Jantes / Rims condition ?

Bien / Good



Photo 75



Photo 76



Photo 77

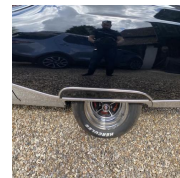


Photo 78

Véhicule repeint / Resprayed vehicle ?

Visible

Qualité Peinture / Paint condition ?

Mauvais / Bad

Peau de pêche à plusieurs endroits
Fissure au niveau des fixations de coffre
Bulles

Trace de reprise grossière aile arg

Trace d'accident / Sign of accident ?

Non Visible

Le coffre souffre-t-il de déformations, réparations ou corrosion / Boot showing signs of deformations, repairs or corrosion ?

No



Photo 79



Photo 80



Photo 81



Photo 82



Photo 83



Photo 84

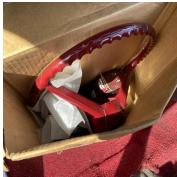


Photo 85



Photo 86



Photo 87



Photo 88



Photo 89



Photo 90



Photo 91



Photo 92



Photo 93



Photo 94



Photo 95



Photo 96



Photo 97



Photo 98



Photo 99

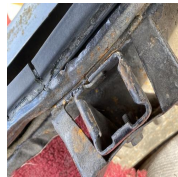


Photo 100

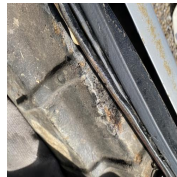


Photo 101



Photo 102



Photo 103



Photo 104



Photo 105



Photo 106



Photo 107

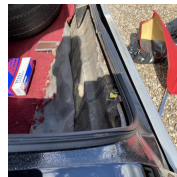


Photo 108



Photo 109

Condition du toit ou de la capote / Roof condition (Convertible) ?

Très bien / Very good

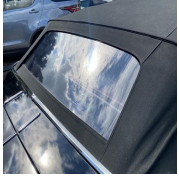


Photo 110



Photo 111



Photo 112



Photo 113



Photo 114

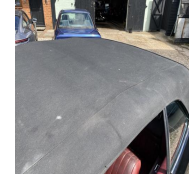


Photo 115



Photo 116

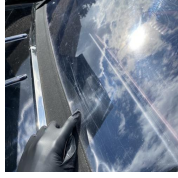


Photo 117

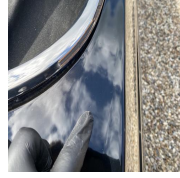


Photo 118

Etat de l'intérieur / Interior condition ?

Moyen / Medium

Siège conducteur craqué

Trace d'usure tableau de bord / colonne direction / seuil de portes



Photo 119



Photo 120

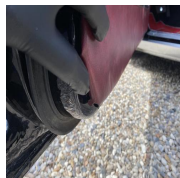


Photo 121

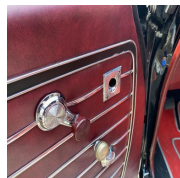


Photo 122

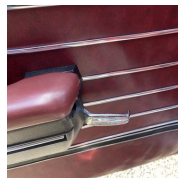


Photo 123

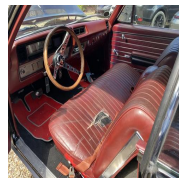


Photo 124

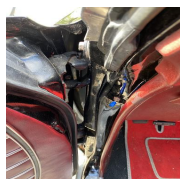


Photo 125



Photo 126



Photo 127



Photo 128



Photo 129



Photo 130

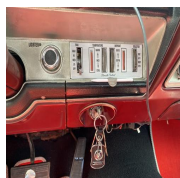


Photo 131



Photo 132

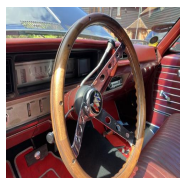


Photo 133

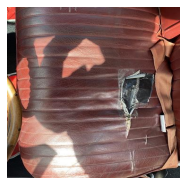


Photo 134



Photo 135

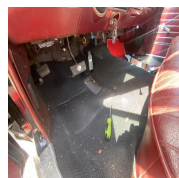


Photo 136

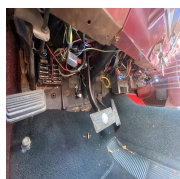


Photo 137

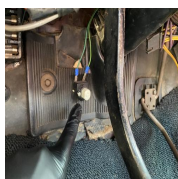


Photo 138

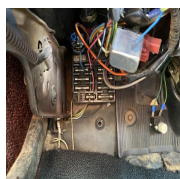


Photo 139

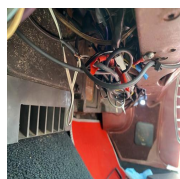


Photo 140

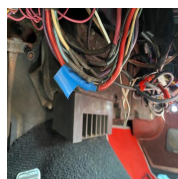


Photo 141

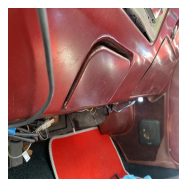


Photo 142

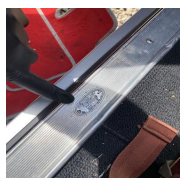


Photo 143

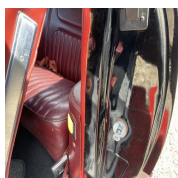


Photo 144



Photo 145

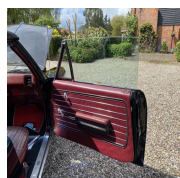


Photo 146



Photo 147



Photo 148



Photo 149

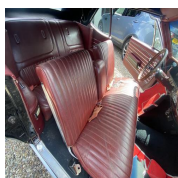


Photo 150

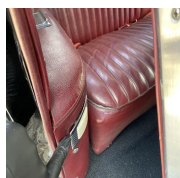


Photo 151

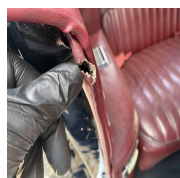


Photo 152

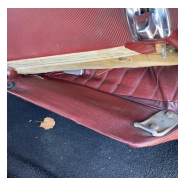


Photo 153

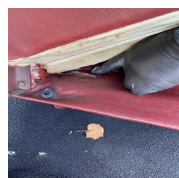


Photo 154

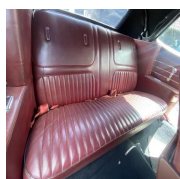


Photo 155

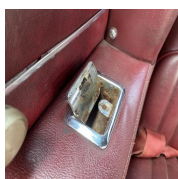


Photo 156

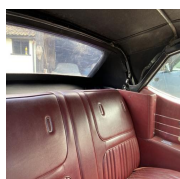


Photo 157

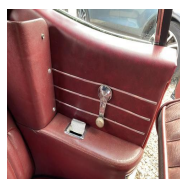


Photo 158

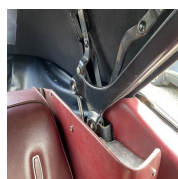


Photo 159

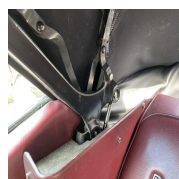


Photo 160



Photo 161



Photo 162



Photo 163



Photo 164



Photo 165



Photo 166

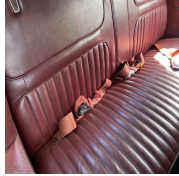


Photo 167

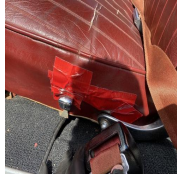


Photo 168

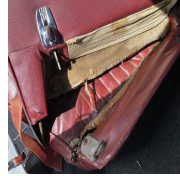


Photo 169

Mileage (Miles)

85005



Photo 170

Témoins allumés / Dashboard lights on ?

No

Klaxon fonctionnel / Horn working ?

Yes

Fermeture centralisée fonctionnelle / Central locking working ?

N/A

Fenêtres fonctionnelles / Windows working ?

Yes

Rétroviseurs fonctionnels / Mirrors working ?

Yes

Unité centrale fonctionnelle / Head unit working ?

N/A

Essuis glace fonctionnels / Wipers working ?

Yes

Eclairage fonctionnel / All lights working ?

Yes

Ouverture - Fermeture de toutes les portes / All doors opening - closing ?

Yes

Ceintures de sécurité fonctionnelles / Seatbelts fastening - unfastening ?

Yes

Parre-brise - fenêtres - rétroviseurs intacts / Windshield - windows - mirrors free from cracks ?

No

1 Impact gravillon bas de pare-brise
Tache type projection peinture vitre passager

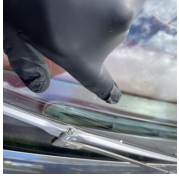


Photo 171



Photo 172

Toit ouvrant fonctionnel / Sunroof working ?

N/A

Corrosion du châssis / Chassis corrosion ?

Bien / Good



Photo 173

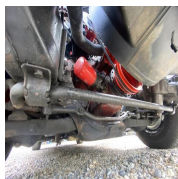


Photo 174

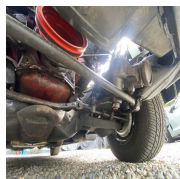


Photo 175

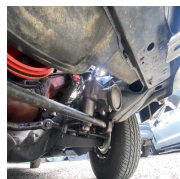


Photo 176

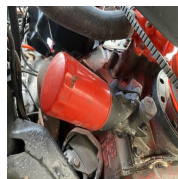


Photo 177

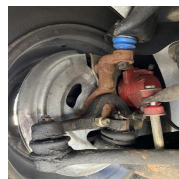


Photo 178

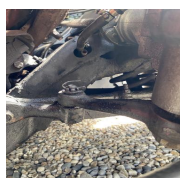


Photo 179

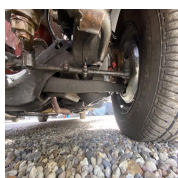


Photo 180

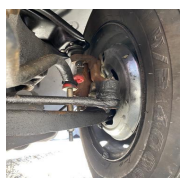


Photo 181

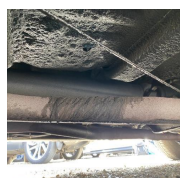


Photo 182

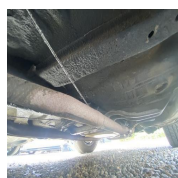


Photo 183



Photo 184

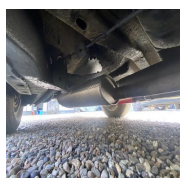


Photo 185

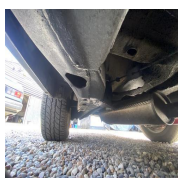


Photo 186

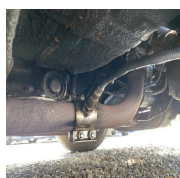


Photo 187

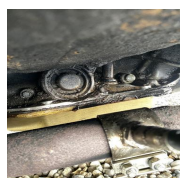


Photo 188

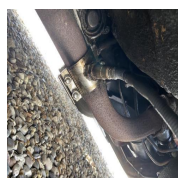


Photo 189

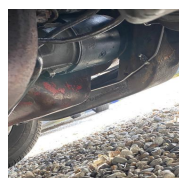


Photo 190

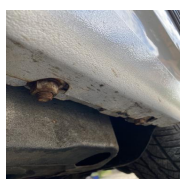


Photo 191

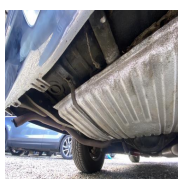


Photo 192

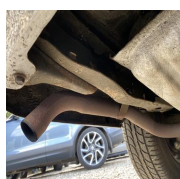


Photo 193

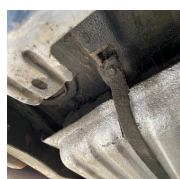


Photo 194

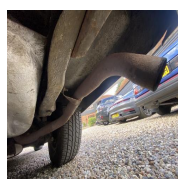


Photo 195

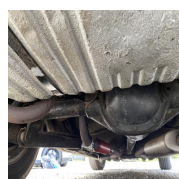


Photo 196

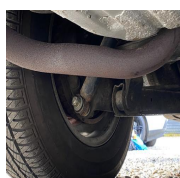


Photo 197

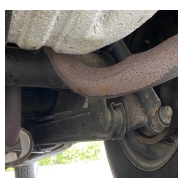


Photo 198



Photo 199

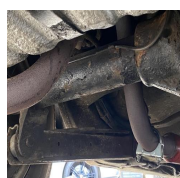


Photo 200

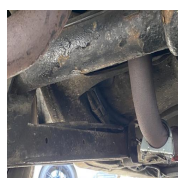


Photo 201

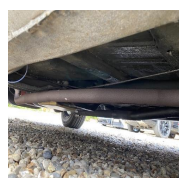


Photo 202

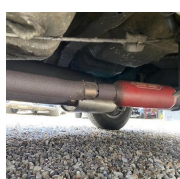


Photo 203

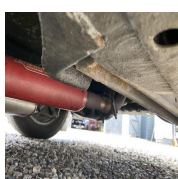


Photo 204

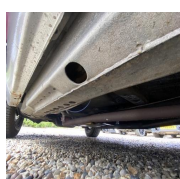


Photo 205

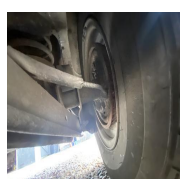


Photo 206

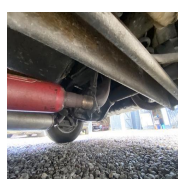


Photo 207

Trace de fuite d'huile / Sign of oil leak?

Non Visible

Possibilité d'utiliser un pont ou une fosse

No

Corrosion / Rust

2 / 3 (66.67%)

Etat general du véhicule sur la corrosion / General rust condition ?

Bien / Good

Détails localisation corrosion / Rust location details

Coffre / Boot

Consommables & Fluides / Consumables & Fluids		36 / 36 (100%)
Roue de secours - galette en bon état / Spare wheel in good condition ?		Yes
Etat des pneus avant / Front tyres condition :		OK
Pneus avant identiques / Front matching tyres ?		Yes
Etat des pneus arrière / Rear tyres condition :		OK
Pneus arrières identiques / Rear matching tyres ?		Yes
Freins avant / Front brakes		OK
Freins arrière / Rear brakes		OK
Liquide de frein / Brake fluid		OK
Etat des courroies / Belts condition (timing & auxiliary):		OK
Huile moteur (état - niveau) / Engine oil (condition - level)		OK
Liquide de refroidissement (état - niveau) / Coolant (condition - level)		N/A
Huile de BV (état - niveau) / Gearbox oil (condition - level)		N/A

Baie moteur accessible / Engine bay accessible ?

Yes

Etat général baie moteur / General condition engine bay ?

Très bien / Very good



Photo 208



Photo 209



Photo 210



Photo 211



Photo 212



Photo 213



Photo 214



Photo 215



Photo 216

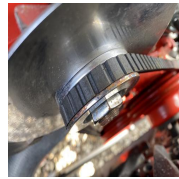


Photo 217



Photo 218

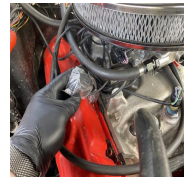


Photo 219

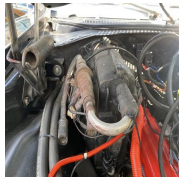


Photo 220

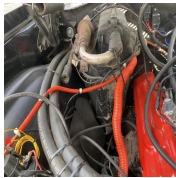


Photo 221

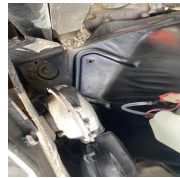


Photo 222

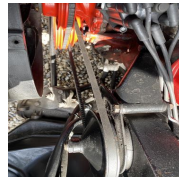


Photo 223

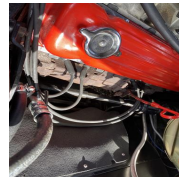


Photo 224

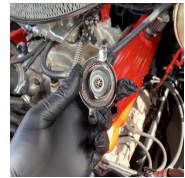


Photo 225



Photo 226

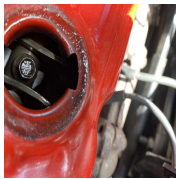


Photo 227

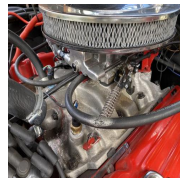


Photo 228

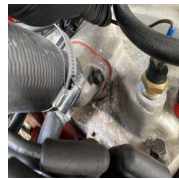


Photo 229

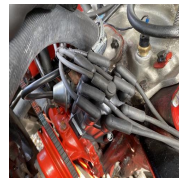


Photo 230



Photo 231

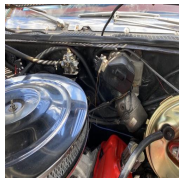


Photo 232



Photo 233



Photo 234

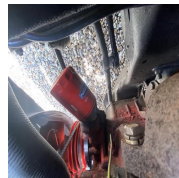


Photo 235

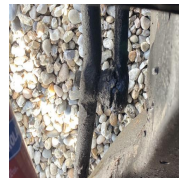


Photo 236

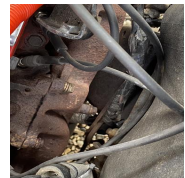


Photo 237

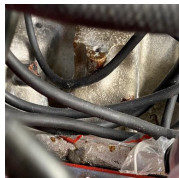


Photo 238

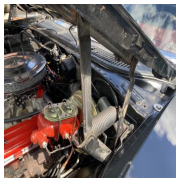


Photo 239

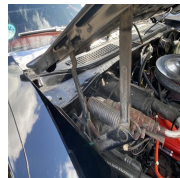


Photo 240

Vidéo moteur tournant / Video running engine (cold & warm)

Transmis par WhatsApp

Vidéo gaz d'échappement / Video exhaust gas

Transmis par WhatsApp

Code(s) erreur trouvés / Fault code(s) found ?

N/A

Essai routier / Test drive		1 / 1 (100%)
Véhicule roulant / Car running ?		Yes
Essai routier effectué par l'inspecteur? / Car test driven by inspector personally?		Yes
Conditions		
	sec / dry	ville / town roads
Moteur / Engine (Bruits , vibrations, fumées / Noises, vibrations, smoke) :		OK
Transmission (Bruits , vibrations, fumées / Noises, vibrations, smoke) :		OK
Suspensions (Condition) : Bruit ard + bruit frottement		À faire vérifier / to be checked
Ressenti direction / Steering wheel abnormal sensations ?		Safe

Conditions véhicule de collection / Classic cars Regulation

3 / 3 (100%)

Agé d'au moins 30 ans / More than 30 years old car

Yes

Correspondre à un modèle ou à un type dont la production a cessé / Car currently not produced

Yes

Se trouver dans leur état d'origine sans modifications substantielles du châssis de la carrosserie, du système de direction, de freinage, de transmission, ou de suspension ni du moteur / Car is conformed to original production without any substantial modification of bodywork, transmission, breaks, gearbox, suspension, engine.

Yes

Nombre de clefs / Number of keys ?

2

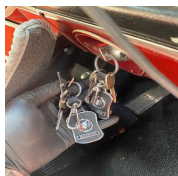


Photo 241

Toutes les clefs fonctionnelles / All keys working ?

Yes

Ecrou antivol présent / Locking nut available ?

N/A

HPI check (base de donnée des assurances) :

N/A

Cat D signifie que le coût des réparations des dommages subits est inférieur au prix argus du véhicule, Cat C le coût des réparations dépasse le prix argus, Cat B le véhicule peut être vendu en pièces détachées uniquement et enfin Cat A, le véhicule ne peut être que détruit.

Correspondance VIN / Matching VIN (chassis, V5, pare-brise / windshield) :

Yes



Photo 242

V5 disponible / Available V5 ?

Yes



Photo 243

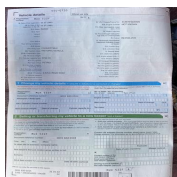


Photo 244

Date du dernier CT / Last MOT Test date ?

Non Concerné

Carnet d'entretien et-ou factures vérifiés / Service book and-or invoices checked ?

Présence Factures



Photo 245

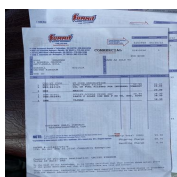


Photo 246



Photo 247



Photo 248



Photo 249



Photo 250



Photo 251

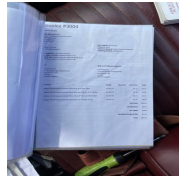


Photo 252



Photo 253



Photo 254



Photo 255

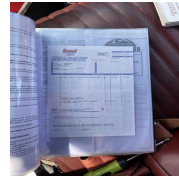


Photo 256

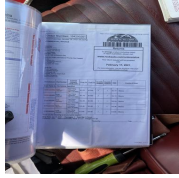


Photo 257



Photo 258



Photo 259



Photo 260

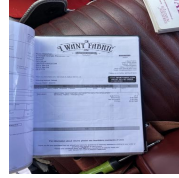


Photo 261

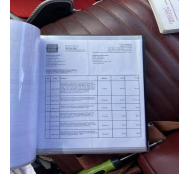


Photo 262



Photo 263



Photo 264

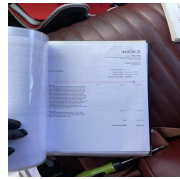


Photo 265

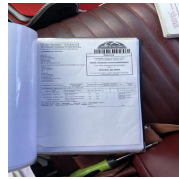


Photo 266



Photo 267

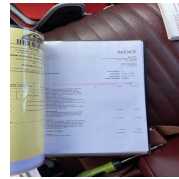


Photo 268

Clement
11.05.2023 17:48 BST

Media summary



Photo 1



Photo 2



Photo 3



Photo 4



Photo 5



Photo 6



Photo 7



Photo 8



Photo 9



Photo 10



Photo 11



Photo 12



Photo 13



Photo 14



Photo 15



Photo 16



Photo 17



Photo 18



Photo 19



Photo 20



Photo 21



Photo 22



Photo 23



Photo 24



Photo 25



Photo 26



Photo 27



Photo 28



Photo 29



Photo 30



Photo 31



Photo 32



Photo 33



Photo 34



Photo 35



Photo 36



Photo 37



Photo 38



Photo 39



Photo 40



Photo 41



Photo 42



Photo 43



Photo 44



Photo 45



Photo 46



Photo 47



Photo 48



Photo 49



Photo 50



Photo 51



Photo 52



Photo 53



Photo 54



Photo 55



Photo 56



Photo 57



Photo 58

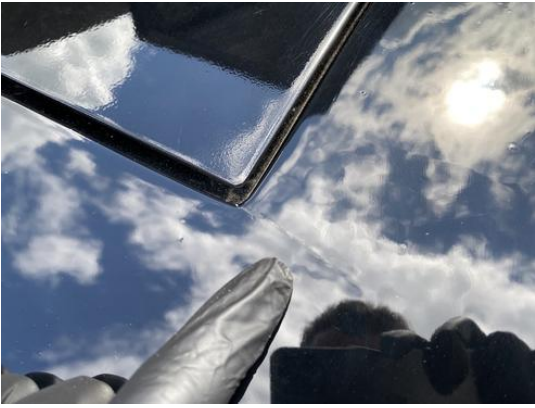


Photo 59



Photo 60



Photo 61



Photo 62



Photo 63



Photo 64



Photo 65



Photo 66



Photo 67



Photo 68



Photo 69



Photo 70



Photo 71



Photo 72



Photo 73



Photo 74



Photo 75



Photo 76



Photo 77



Photo 78



Photo 79



Photo 80



Photo 81



Photo 82



Photo 83



Photo 84



Photo 85



Photo 86



Photo 87



Photo 88



Photo 89



Photo 90



Photo 91



Photo 92



Photo 93



Photo 94



Photo 95



Photo 96



Photo 97



Photo 98



Photo 99



Photo 100



Photo 101



Photo 102



Photo 103



Photo 104



Photo 105



Photo 106



Photo 107



Photo 108



Photo 109



Photo 110



Photo 111



Photo 112



Photo 113



Photo 114



Photo 115



Photo 116



Photo 117



Photo 118



Photo 119



Photo 120



Photo 121



Photo 122



Photo 123



Photo 124



Photo 125



Photo 126



Photo 127



Photo 128



Photo 129



Photo 130



Photo 131



Photo 132



Photo 133



Photo 134



Photo 135



Photo 136



Photo 137



Photo 138

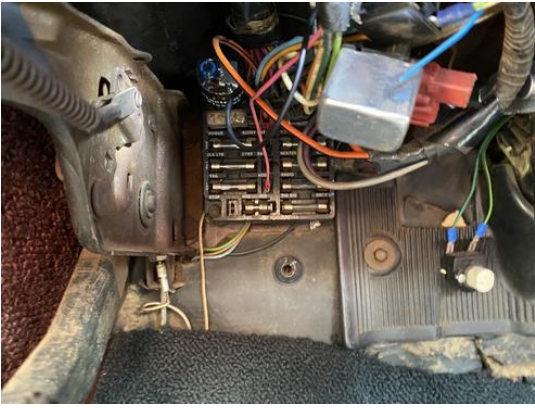


Photo 139



Photo 140



Photo 141



Photo 142



Photo 143



Photo 144



Photo 145



Photo 146



Photo 147



Photo 148



Photo 149



Photo 150



Photo 151



Photo 152



Photo 153



Photo 154



Photo 155



Photo 156



Photo 157



Photo 158

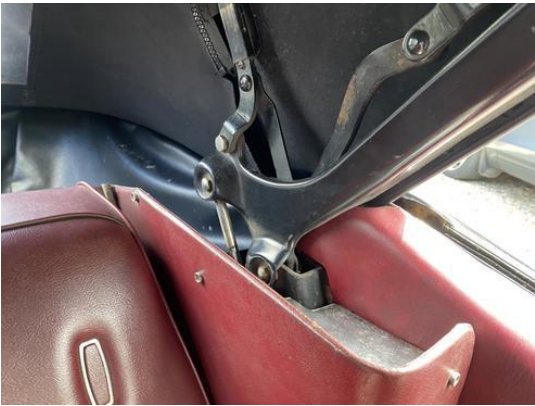


Photo 159

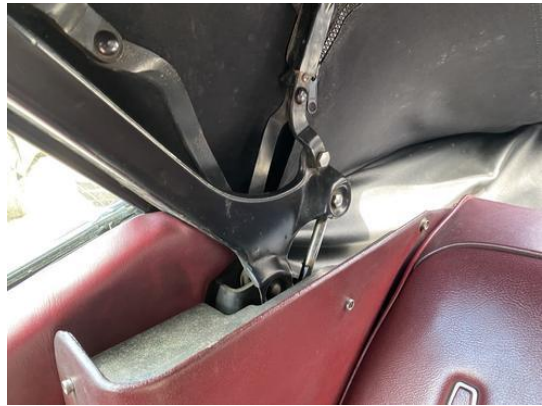


Photo 160



Photo 161



Photo 162



Photo 163



Photo 164



Photo 165



Photo 166

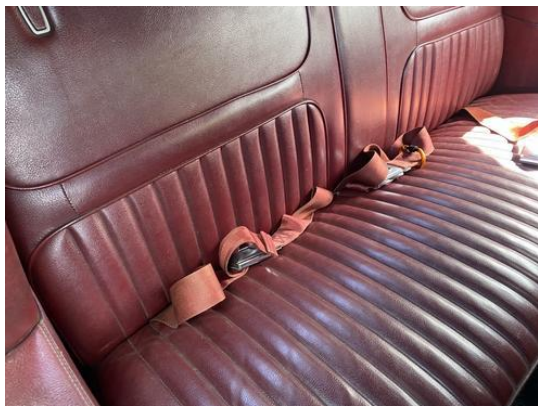


Photo 167

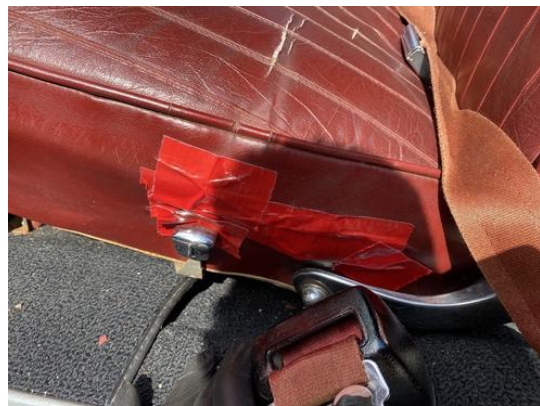


Photo 168



Photo 169



Photo 170



Photo 171



Photo 172



Photo 173



Photo 174



Photo 175



Photo 176



Photo 177



Photo 178



Photo 179



Photo 180



Photo 181



Photo 182



Photo 183

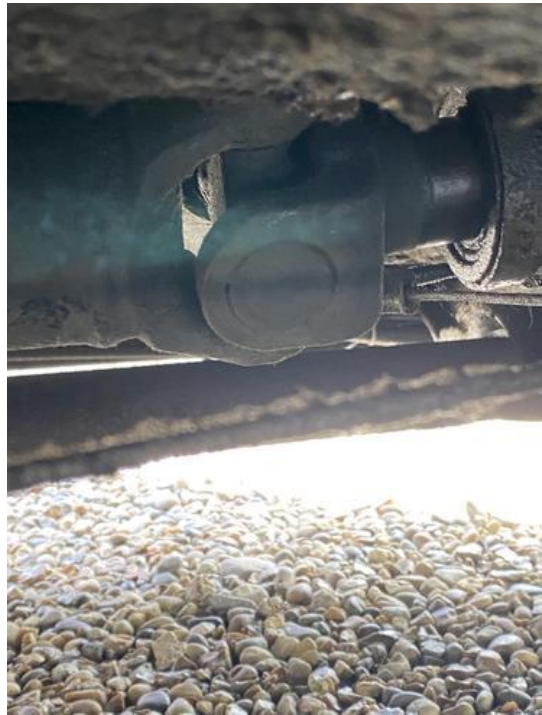


Photo 184



Photo 185



Photo 186



Photo 187

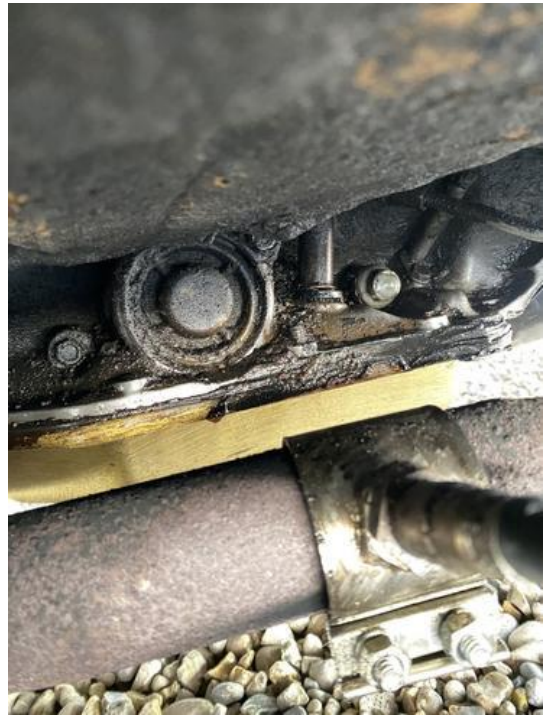


Photo 188



Photo 189



Photo 190



Photo 191



Photo 192



Photo 193



Photo 194



Photo 195



Photo 196



Photo 197



Photo 198



Photo 199



Photo 200



Photo 201



Photo 202



Photo 203



Photo 204



Photo 205



Photo 206

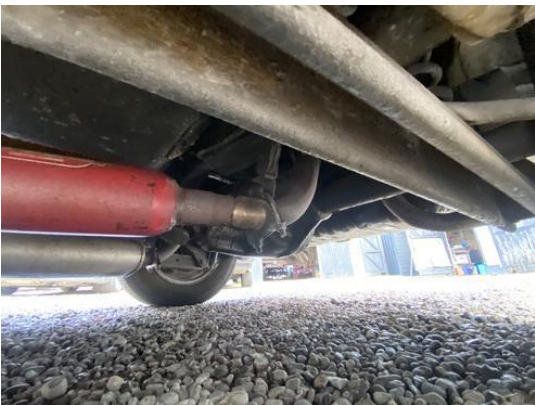


Photo 207



Photo 208



Photo 209



Photo 210



Photo 211



Photo 212



Photo 213



Photo 214



Photo 215



Photo 216



Photo 217



Photo 218



Photo 219



Photo 220

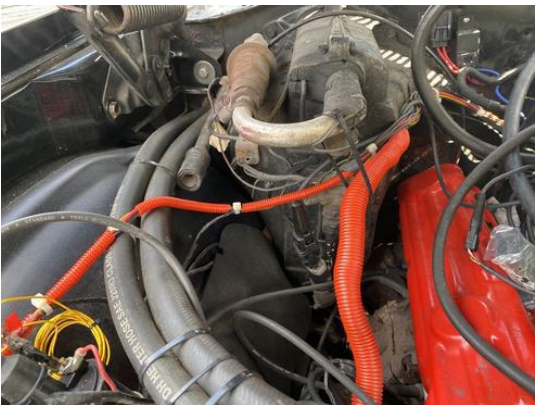


Photo 221



Photo 222



Photo 223



Photo 224



Photo 225



Photo 226

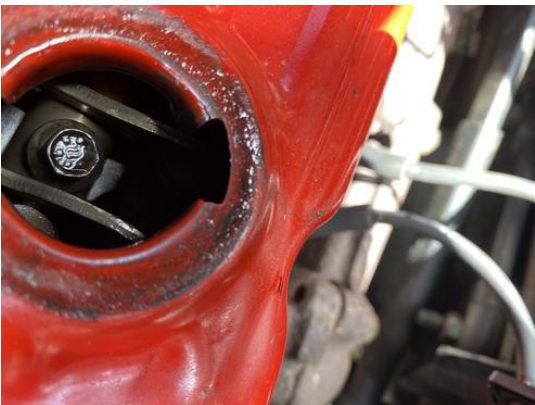


Photo 227



Photo 228



Photo 229



Photo 230



Photo 231



Photo 232



Photo 233



Photo 234



Photo 235



Photo 236



Photo 237



Photo 238



Photo 239



Photo 240



Photo 241



Photo 242

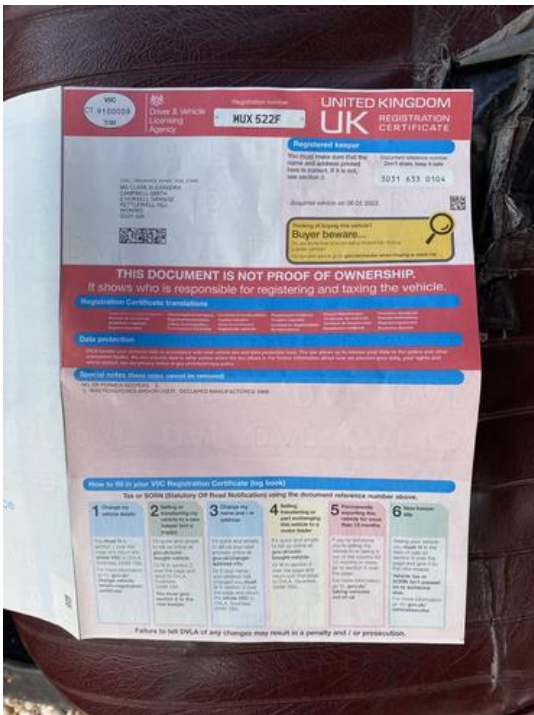


Photo 243

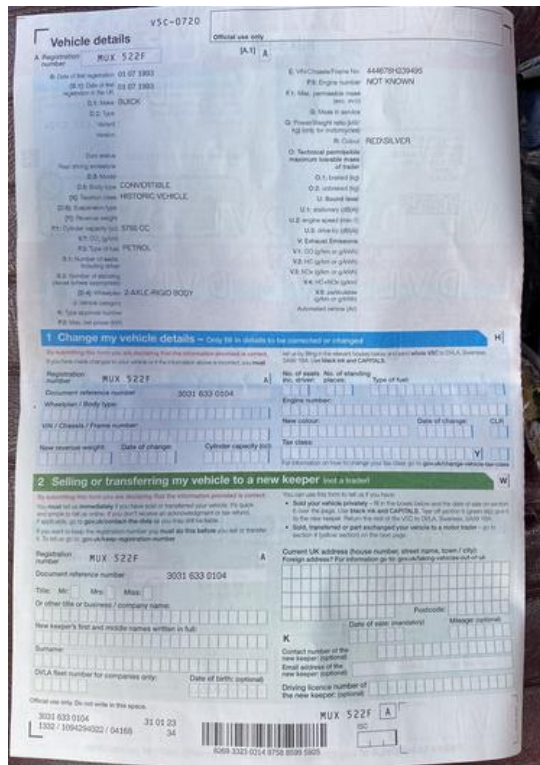


Photo 244

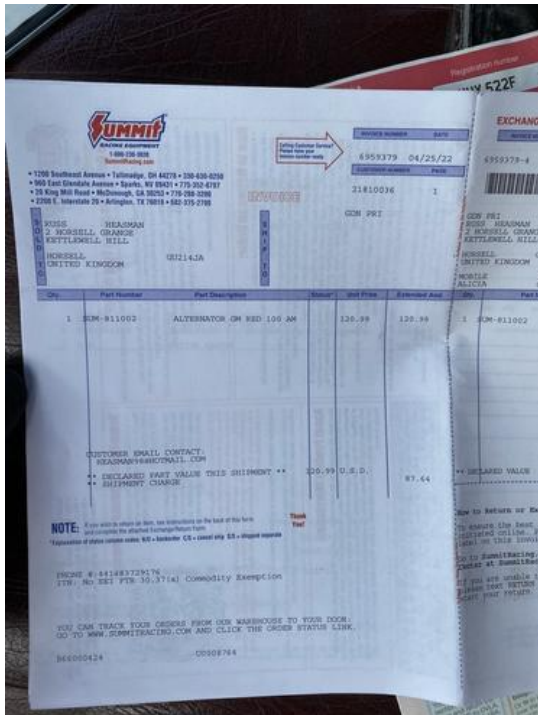


Photo 245



Photo 246

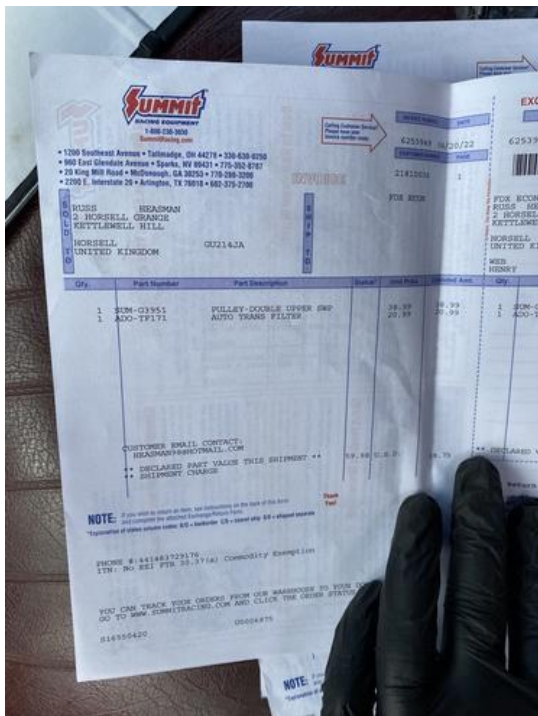


Photo 247

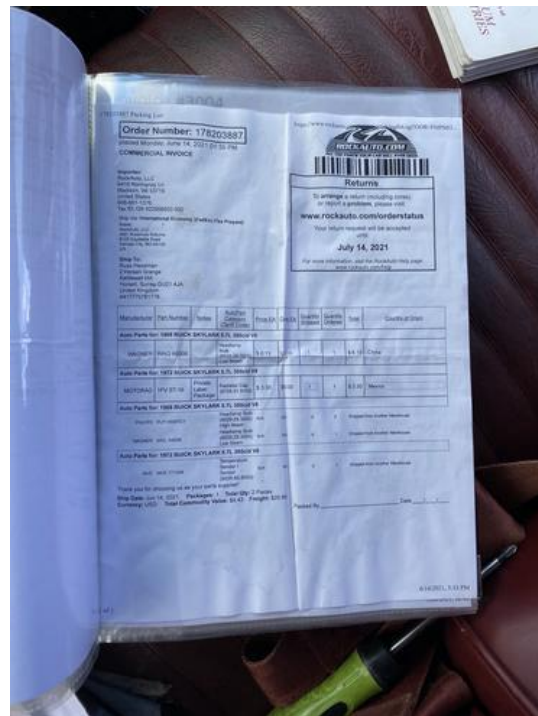


Photo 248

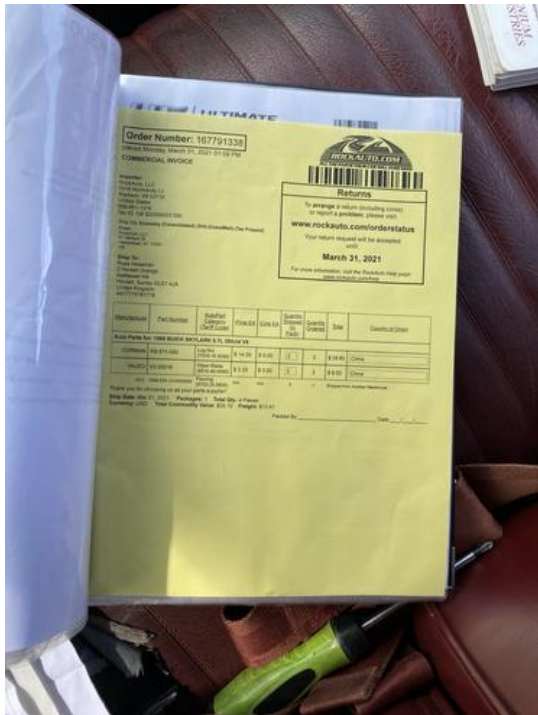


Photo 253



Photo 254

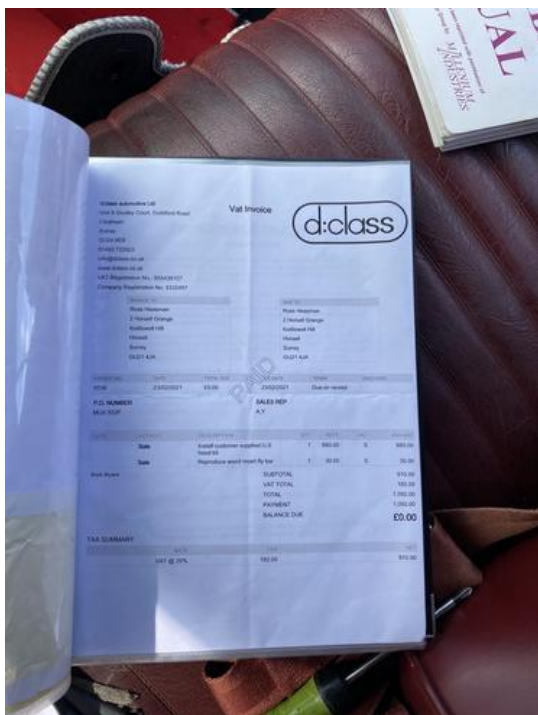


Photo 255

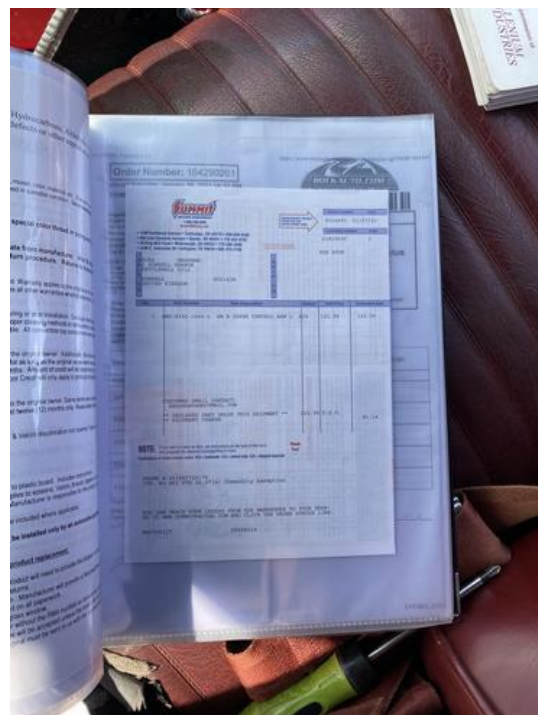


Photo 256

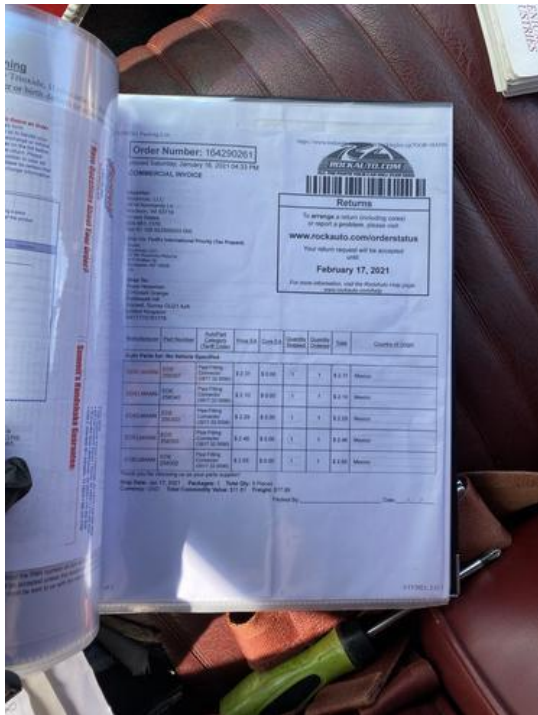


Photo 257

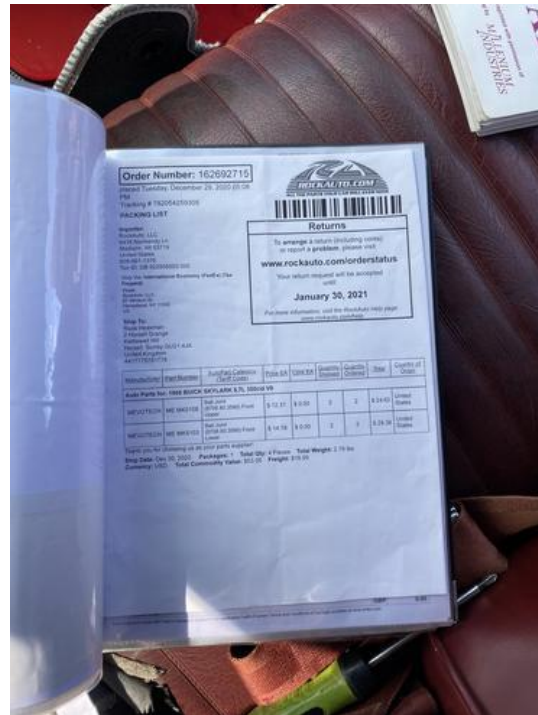


Photo 258



Photo 259

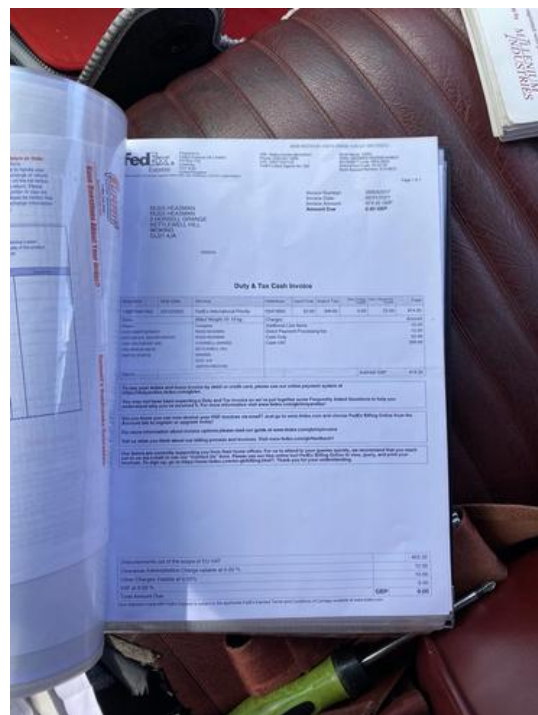


Photo 260

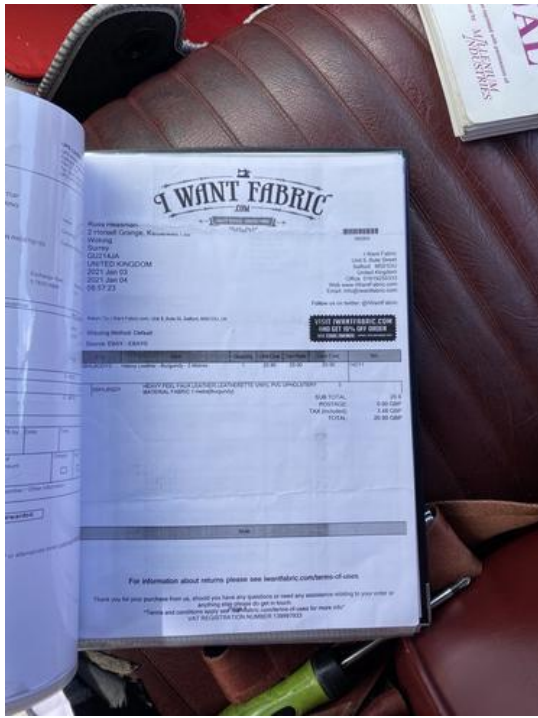


Photo 261

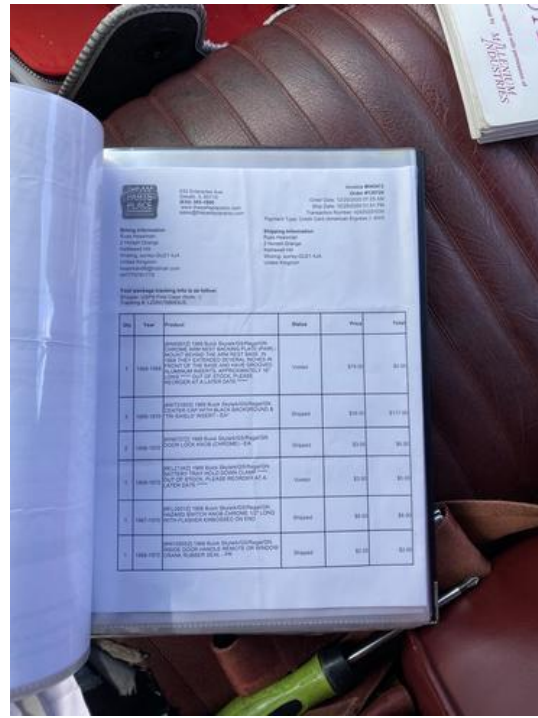


Photo 262



Photo 263



Photo 264

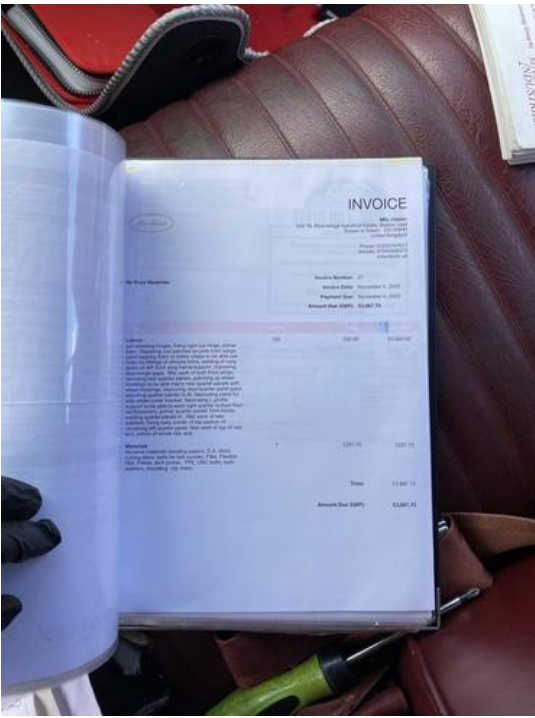


Photo 265

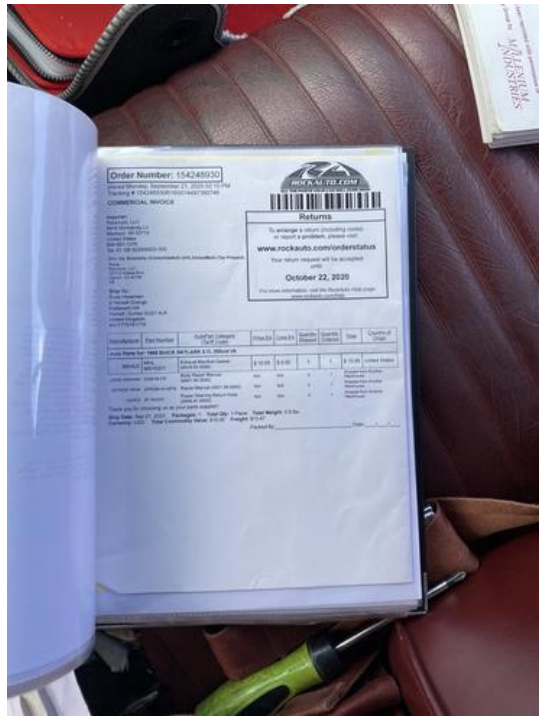


Photo 266

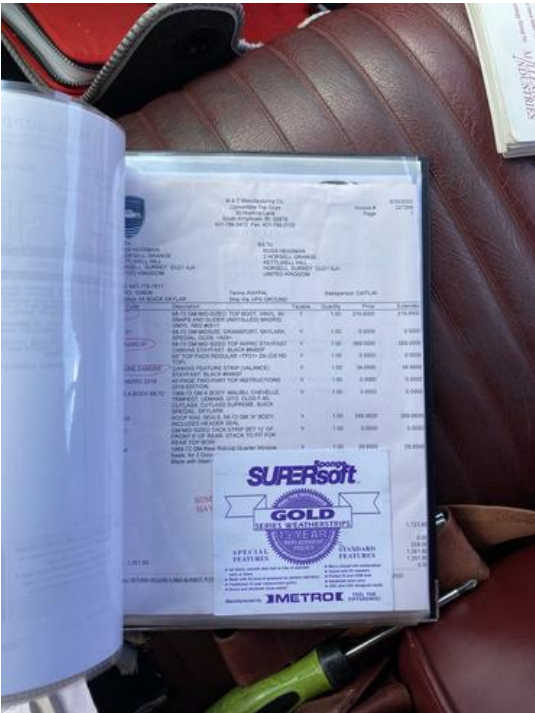


Photo 267

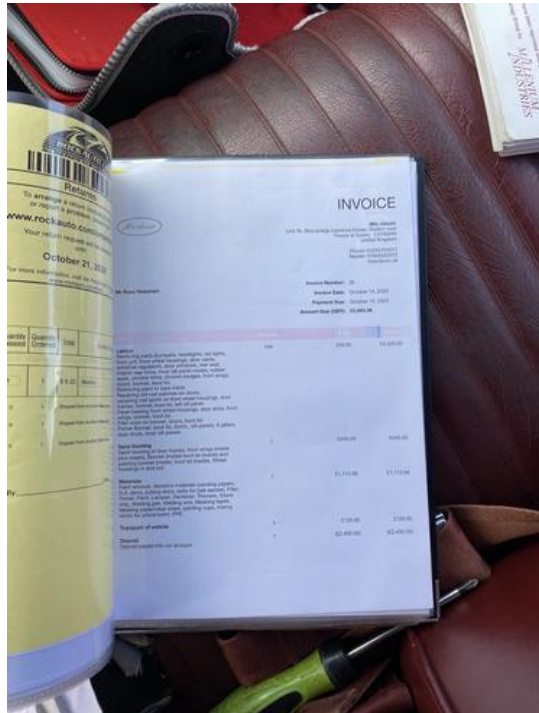


Photo 268