



# Inspection Auto Gocarz Export

Gocarz France / Morgan 4+ / C727 KNV

Complete

Score	<b>82.79%</b>	Flagged items	<b>2</b>	Actions	<b>0</b>
<b>Site conducted</b>	Unanswered				
<b>Réalisé le / Conducted on :</b>	07.02.2023 12:42 GMT				
<b>Nom de l'inspecteur / Inspector's name :</b>	Gocarz France				
<b>Localisation / Location :</b>	56 Boundary Road Carshalton Angleterre SM5 4AD Royaume-Uni (51.35361798650438, -0.15662391049348057)				
<b>Immatriculation véhicule / Car registration # :</b>	C727 KNV				
<b>Marque &amp; Modèle de véhicule / Car's Make &amp; Model</b>	Morgan 4+				

**Flagged items**

2 flagged

Soubassements, Chassis / Underbody

**Trace de fuite d'huile / Sign of oil leak?**

Visible

De nombreux corps gras se trouvent dans le compartiment moteur et sur le système de direction.

---

Mécanique / Mechanic

**Code(s) erreur trouvés / Fault code(s) found ?**

N/A

Condition de la carrosserie / Bodywork condition ?

Moyen / Medium

La carrosserie est dans sa patine d'origine.

De nombreux éclats sont visibles et localisés un peu partout sur le véhicule.



Photo 1



Photo 2



Photo 3



Photo 4



Photo 5



Photo 6

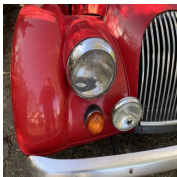


Photo 7

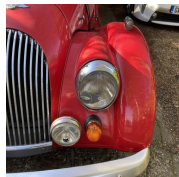


Photo 8



Photo 9



Photo 10



Photo 11

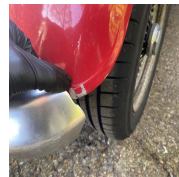


Photo 12

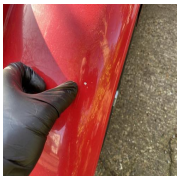


Photo 13

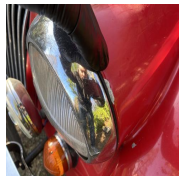


Photo 14

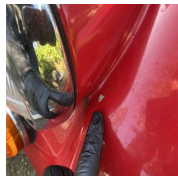


Photo 15

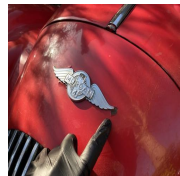


Photo 16

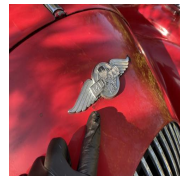


Photo 17

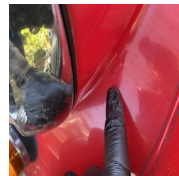


Photo 18

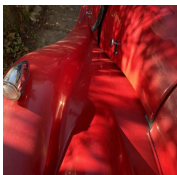


Photo 19

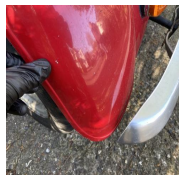


Photo 20

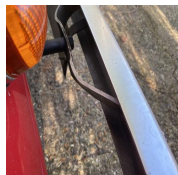


Photo 21



Photo 22

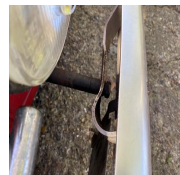


Photo 23

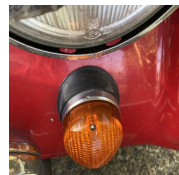


Photo 24



Photo 25

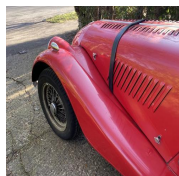


Photo 26

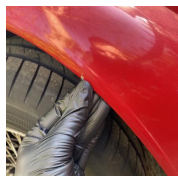


Photo 27



Photo 28

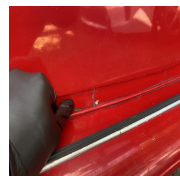


Photo 29

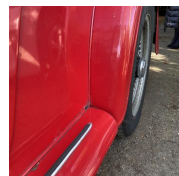


Photo 30

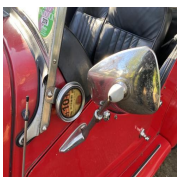


Photo 31



Photo 32



Photo 33

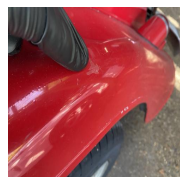


Photo 34

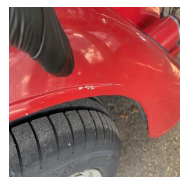


Photo 35



Photo 36



Photo 37



Photo 38



Photo 39

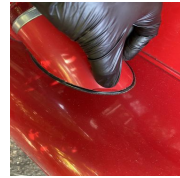


Photo 40



Photo 41



Photo 42

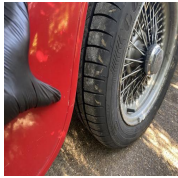


Photo 43



Photo 44

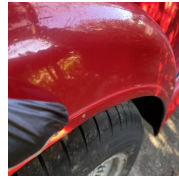


Photo 45

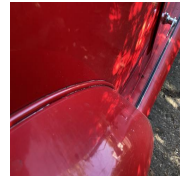


Photo 46



Photo 47



Photo 48

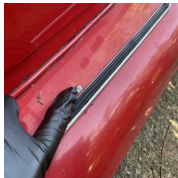


Photo 49

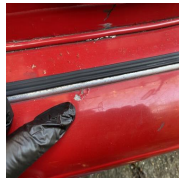


Photo 50



Photo 51



Photo 52



Photo 53

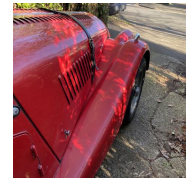


Photo 54

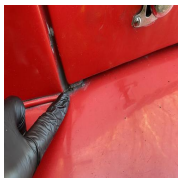


Photo 55

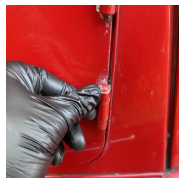


Photo 56

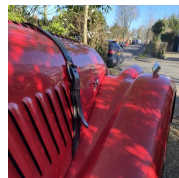


Photo 57

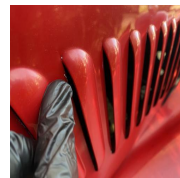


Photo 58



Photo 59

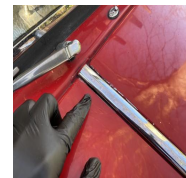


Photo 60

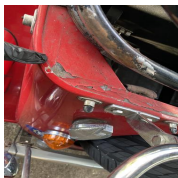


Photo 61



Photo 62

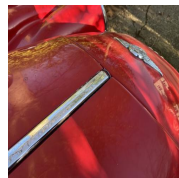


Photo 63

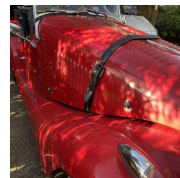


Photo 64

**Condition des Jantes / Rims condition ?**

Moyen / Medium

Les jantes sont piquées et nécessiteront un rafraîchissement.



Photo 65



Photo 66

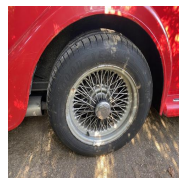


Photo 67



Photo 68

**Véhicule repeint / Resprayed vehicle ?**

Non visible

Peinture d'origine sur le véhicule.

**Qualité Peinture / Paint condition ?**

Moyen / Medium



Photo 69



Photo 70



Photo 71



Photo 72



Photo 73



Photo 74



Photo 75



Photo 76



Photo 77



Photo 78



Photo 79



Photo 80



Photo 81

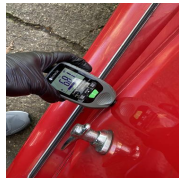


Photo 82



Photo 83



Photo 84



Photo 85



Photo 86



Photo 87



Photo 88



Photo 89

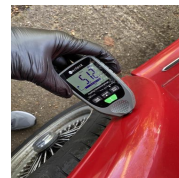


Photo 90



Photo 91



Photo 92



Photo 93



Photo 94



Photo 95



Photo 96

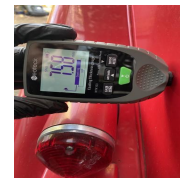


Photo 97



Photo 98



Photo 99

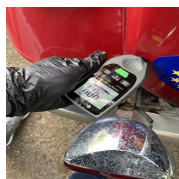


Photo 100

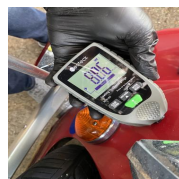


Photo 101

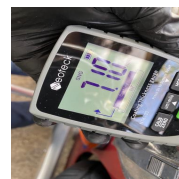


Photo 102



Photo 103



Photo 104



Photo 105



Photo 106



Photo 107



Photo 108



Photo 109



Photo 110



Photo 111



Photo 112



Photo 113



Photo 114

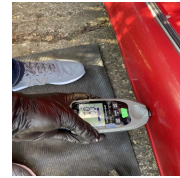


Photo 115

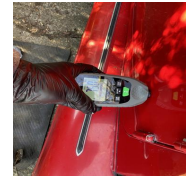


Photo 116



Photo 117



Photo 118

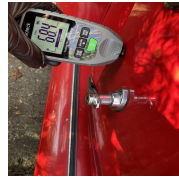


Photo 119

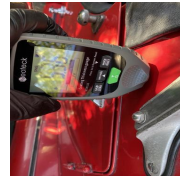


Photo 120

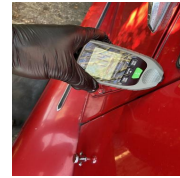


Photo 121



Photo 122



Photo 123



Photo 124



Photo 125



Photo 126



Photo 127



Photo 128



Photo 129



Photo 130

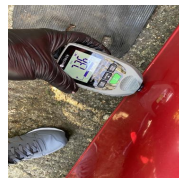


Photo 131



Photo 132

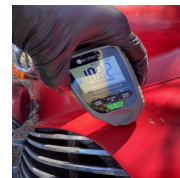


Photo 133

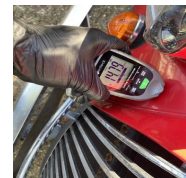


Photo 134

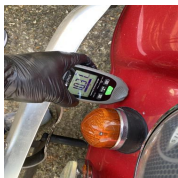


Photo 135



Photo 136

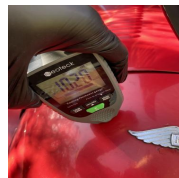


Photo 137



Photo 138

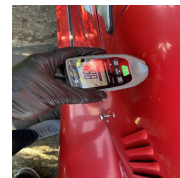


Photo 139



Photo 140

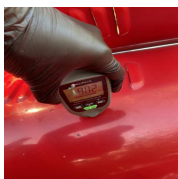


Photo 141



Photo 142

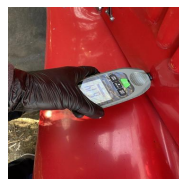


Photo 143

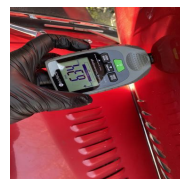


Photo 144

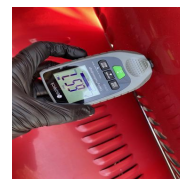


Photo 145

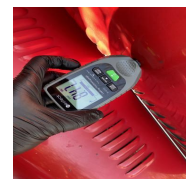


Photo 146

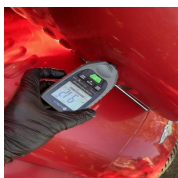


Photo 147

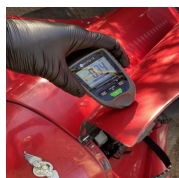


Photo 148

**Trace d'accident / Sign of accident ?**

Non Visible

Aucune réparation décelée dans les conditions de l'inspection.

**Le coffre souffre-t-il de déformations, réparations ou corrosion / Boot showing signs of deformations, repairs or corrosion ?**

No

**Condition du toit ou de la capote / Roof condition (Convertible) ?**

Bien / Good

Les plastiques transparents sont légèrement ternis.



Photo 149



Photo 150



Photo 151



Photo 152



Photo 153



Photo 154

Etat de l'intérieur / Interior condition ?

Bien / Good

L'ensemble est fonctionnel hormis le bouton de commande des warnings qui fonctionne par intermittence.

Les planchers sont en bon état et ne présentent pas de trous visibles.

Les cuirs sont en bon état.

Pour une meilleure présentation l'intérieur nécessite un nettoyage approfondi.



Photo 155

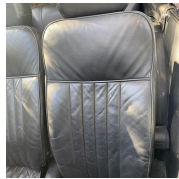


Photo 156



Photo 157



Photo 158



Photo 159



Photo 160

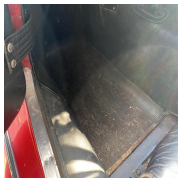


Photo 161

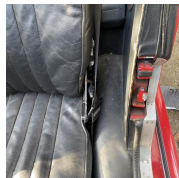


Photo 162



Photo 163



Photo 164

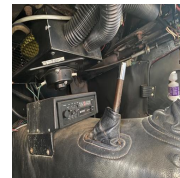


Photo 165



Photo 166



Photo 167

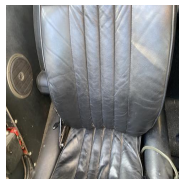


Photo 168

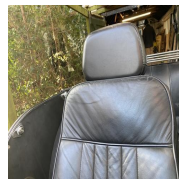


Photo 169



Photo 170



Photo 171



Photo 172

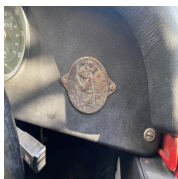


Photo 173



Photo 174



Photo 175

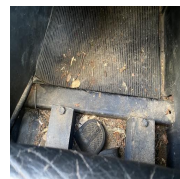


Photo 176

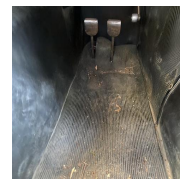


Photo 177



Photo 178



Photo 179



Photo 180

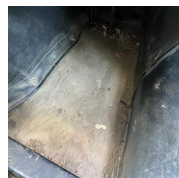


Photo 181

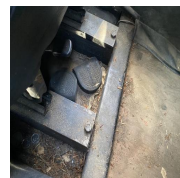


Photo 182



Photo 183

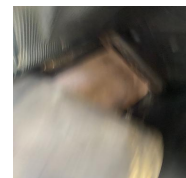


Photo 184

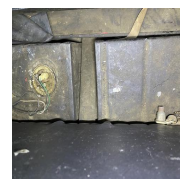
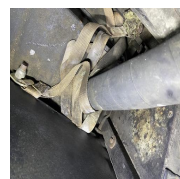
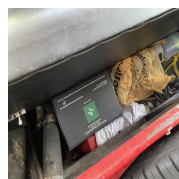
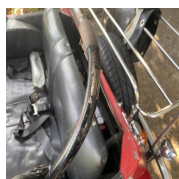




Photo 185

Photo 186

Photo 187

Photo 188

Photo 189

Photo 190



Photo 191

**Mileage (Miles)**

30656



Photo 192

**Témoins allumés / Dashboard lights on ?**

No

**Klaxon fonctionnel / Horn working ?**

Yes

**Fermeture centralisée fonctionnelle / Central locking working ?**

N/A

**Fenêtres fonctionnelles / Windows working ?**

N/A

**Rétroviseurs fonctionnels / Mirrors working ?**

N/A

**Unité centrale fonctionnelle / Head unit working ?**

N/A

**Essuis glace fonctionnels / Wipers working ?**

Yes

**Eclairage fonctionnel / All lights working ?**

Yes



Photo 193

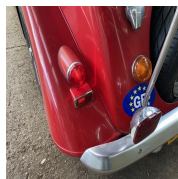


Photo 194



Photo 195



Photo 196



Photo 197

**Ouverture - Fermeture de toutes les portes / All doors opening - closing ?**

Yes

**Ceintures de sécurité fonctionnelles / Seatbelts fastening - unfastening ?**

Yes

**Parre-brise - fenêtres - rétroviseurs intacts / Windshield - windows - mirrors free from cracks ?**

Yes



Photo 198



Photo 199



Photo 200

**Toit ouvrant fonctionnel / Sunroof working ?**

N/A

Corrosion du châssis / Chassis corrosion ?

Très bien / Very good



Photo 201



Photo 202

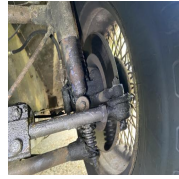


Photo 203

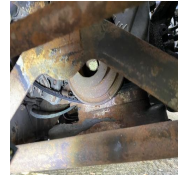


Photo 204



Photo 205

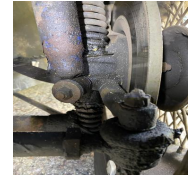


Photo 206

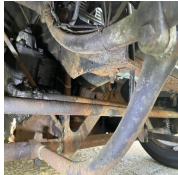


Photo 207

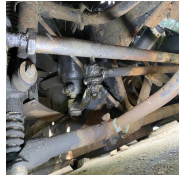


Photo 208



Photo 209

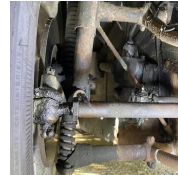


Photo 210

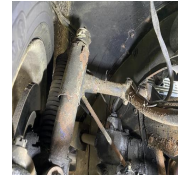


Photo 211



Photo 212

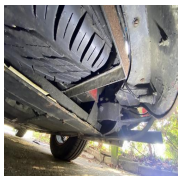


Photo 213

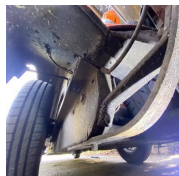


Photo 214



Photo 215



Photo 216

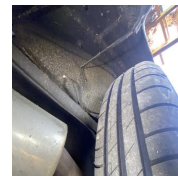


Photo 217



Photo 218



Photo 219

Trace de fuite d'huile / Sign of oil leak?

Visible

De nombreux corps gras se trouvent dans le compartiment moteur et sur le système de direction.

Possibilité d'utiliser un pont ou une fosse

No

**Corrosion / Rust**

100%

**Etat general du véhicule sur la corrosion / General rust condition ?**

Très bien / Very good

**Détails localisation corrosion / Rust location details**

Chassis / Basement

**Consommables & Fluides / Consumables & Fluids**

91.67%

**Roue de secours - galette en bon état / Spare wheel in good condition ?**

Yes

**Etat des pneus avant / Front tyres condition :**

OK



Photo 220



Photo 221

**Pneus avant identiques / Front matching tyres ?**

Yes

**Etat des pneus arrière / Rear tyres condition :**

OK

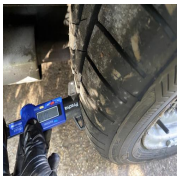


Photo 222

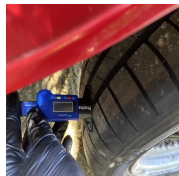


Photo 223

**Pneus arrières identiques / Rear matching tyres ?**

Yes

**Freins avant / Front brakes**

OK

**Freins arrière / Rear brakes**

OK

**Liquide de frein / Brake fluid**

OK

**Etat des courroies / Belts condition (timing & auxiliary):**

À faire vérifier / to be checked

**Huile moteur (état - niveau) / Engine oil (condition - level)**

OK

**Liquide de refroidissement (état - niveau) / Coolant (condition - level)**

À faire vérifier / to be checked

**Huile de BV (état - niveau) / Gearbox oil (condition - level)**

N/A

**Mécanique / Mechanic**

1 flagged, 82.14%

**Baie moteur accessible / Engine bay accessible ?**

Yes

**Etat général baie moteur / General condition engine bay ?**

Moyen / Medium

Nombreux corps gras répartis sur l'ensemble du moteur.



Photo 224



Photo 225

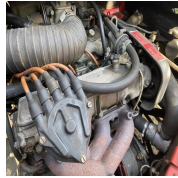


Photo 226

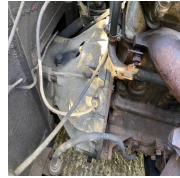


Photo 227

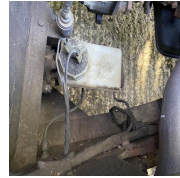


Photo 228



Photo 229

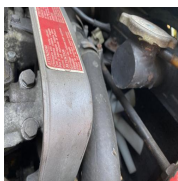


Photo 230

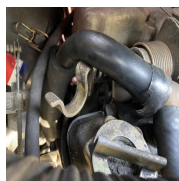


Photo 231



Photo 232

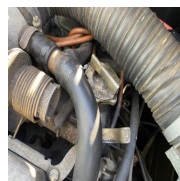


Photo 233

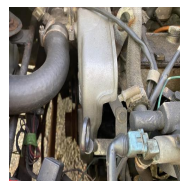


Photo 234

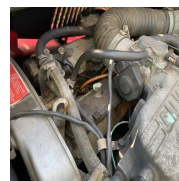


Photo 235

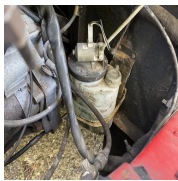


Photo 236



Photo 237



Photo 238

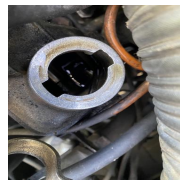


Photo 239

**Vidéo moteur tournant / Video running engine (cold & warm)**

Transmis par WhatsApp

**Vidéo gaz d'échappement / Video exhaust gas**

Transmis par WhatsApp

**Code(s) erreur trouvés / Fault code(s) found ?**

N/A

**Essai routier / Test drive**

100%

**Véhicule roulant / Car running ?**

Yes

**Essai routier effectué par l'inspecteur? / Car test driven by inspector personally?**

Yes

**Conditions**

sec / dry

ville / town roads

10 - 15 min

**Moteur / Engine (Bruits , vibrations, fumées / Noises, vibrations, smoke) :**

OK

**Transmission (Bruits , vibrations, fumées / Noises, vibrations, smoke) :**

OK

**Suspensions (Condition) :**

OK

**Ressenti direction / Steering wheel abnormal sensations ?**

Safe

**Conditions véhicule de collection / Classic cars Regulation**

100%

**Agé d'au moins 30 ans / More than 30 years old car**

Yes

**Correspondre à un modèle ou à un type dont la production a cessé / Car currently not produced**

Yes

**Se trouver dans leur état d'origine sans modifications substantielles du châssis de la carrosserie, du système de direction, de freinage, de transmission, ou de suspension ni du moteur / Car is conformed to original production without any substantial modification of bodywork, transmission, breaks, gearbox, suspension, engine.**

Yes



Administratif

77.78%

Nombre de clefs / Number of keys ?

1

Toutes les clefs fonctionnelles / All keys working ?

Yes

Ecrou antivol présent / Locking nut available ?

N/A

HPI check (base de donnée des assurances) :

N/A

Cat D signifie que le coût des réparations des dommages subits est inférieur au prix argus du véhicule, Cat C le coût des réparations dépasse le prix argus, Cat B le véhicule peut être vendu en pièces détachées uniquement et enfin Cat A, le véhicule ne peut être que détruit.

Correspondance VIN / Matching VIN (chassis, V5, pare-brise / windshield) :

Yes



Photo 240

V5 disponible / Available V5 ?

Yes

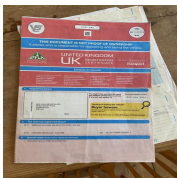


Photo 241



Photo 242

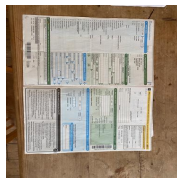


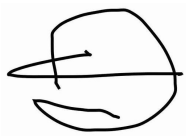
Photo 243

Date du dernier CT / Last MOT Test date ?

Non Concerné

Carnet d'entretien et-ou factures vérifiés / Service book and-or invoices checked ?

Présence Carnet + Factures



Clement  
07.02.2023 19:33 GMT

## Media summary



Photo 1



Photo 2



Photo 3



Photo 4



Photo 5



Photo 6



Photo 7



Photo 8



Photo 9



Photo 10



Photo 11



Photo 12



Photo 13



Photo 14



Photo 15



Photo 16



Photo 17



Photo 18



Photo 19



Photo 20



Photo 21



Photo 22



Photo 23



Photo 24



Photo 25



Photo 26



Photo 27



Photo 28



Photo 29



Photo 30



Photo 31



Photo 32



Photo 33



Photo 34



Photo 35



Photo 36



Photo 37



Photo 38



Photo 39



Photo 40



Photo 41



Photo 42



Photo 43



Photo 44



Photo 45



Photo 46



Photo 47



Photo 48



Photo 49



Photo 50



Photo 51



Photo 52





Photo 53



Photo 54



Photo 55



Photo 56



Photo 57



Photo 58



Photo 59



Photo 60



Photo 61



Photo 62



Photo 63



Photo 64



Photo 65



Photo 66



Photo 67



Photo 68



Photo 69



Photo 70



Photo 71



Photo 72



Photo 73



Photo 74



Photo 75



Photo 76



Photo 77



Photo 78



Photo 79



Photo 80



Photo 81



Photo 82



Photo 83



Photo 84



Photo 85



Photo 86



Photo 87



Photo 88



Photo 89



Photo 90



Photo 91



Photo 92





Photo 93



Photo 94



Photo 95



Photo 96



Photo 97



Photo 98



Photo 99



Photo 100



Photo 101



Photo 102



Photo 103



Photo 104



Photo 105



Photo 106



Photo 107



Photo 108



Photo 109



Photo 110



Photo 111



Photo 112



Photo 113



Photo 114



Photo 115



Photo 116



Photo 117



Photo 118



Photo 119

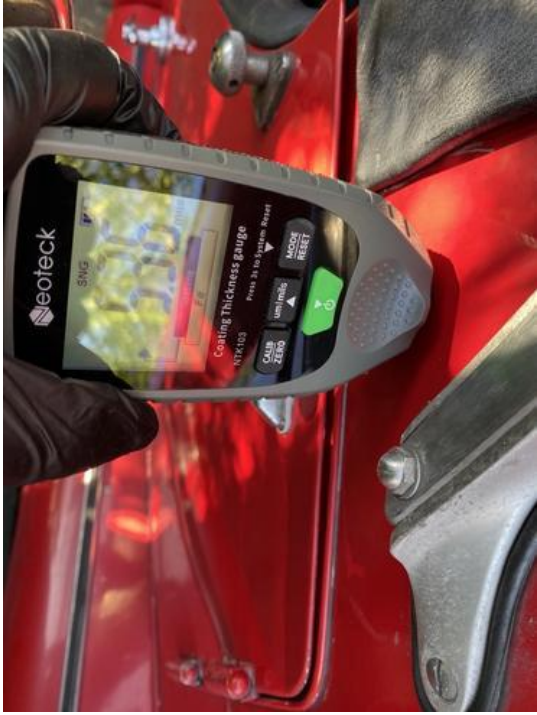


Photo 120



Photo 121



Photo 122



Photo 123



Photo 124





Photo 125



Photo 126



Photo 127



Photo 128



Photo 129



Photo 130



Photo 131



Photo 132



Photo 133



Photo 134



Photo 135



Photo 136



Photo 137



Photo 138



Photo 139



Photo 140



Photo 141



Photo 142



Photo 143



Photo 144



Photo 145



Photo 146



Photo 147

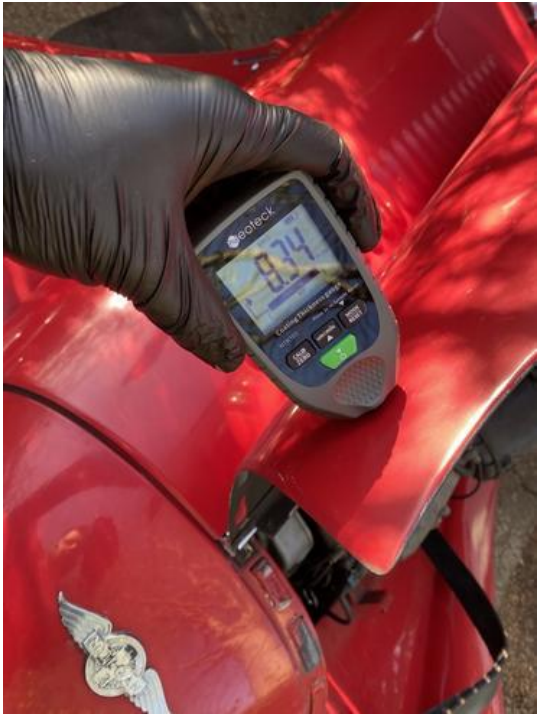


Photo 148



Photo 149



Photo 150



Photo 151



Photo 152



Photo 153



Photo 154



Photo 155



Photo 156



Photo 157



Photo 158

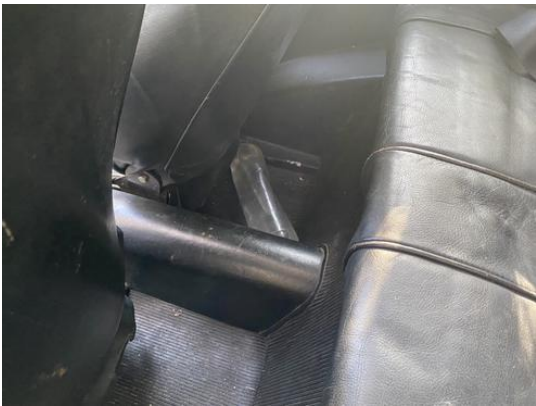


Photo 159



Photo 160



Photo 161



Photo 162





Photo 163



Photo 164



Photo 165



Photo 166



Photo 167



Photo 168



Photo 169



Photo 170



Photo 171



Photo 172



Photo 173



Photo 174



Photo 175



Photo 176



Photo 177



Photo 178



Photo 179



Photo 180



Photo 181



Photo 182



Photo 183



Photo 184



Photo 185



Photo 186



Photo 187



Photo 188



Photo 189



Photo 190



Photo 191



Photo 192



Photo 193



Photo 194



Photo 195



Photo 196



Photo 197



Photo 198



Photo 199



Photo 200



Photo 201



Photo 202



Photo 203



Photo 204



Photo 205



Photo 206



Photo 207



Photo 208



Photo 209



Photo 210



Photo 211



Photo 212



Photo 213



Photo 214



Photo 215



Photo 216



Photo 217



Photo 218





Photo 219



Photo 220



Photo 221



Photo 222



Photo 223



Photo 224



Photo 225



Photo 226



Photo 227



Photo 228



Photo 229



Photo 230

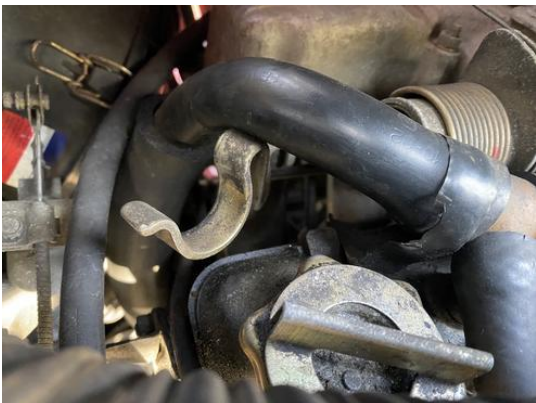


Photo 231



Photo 232



Photo 233

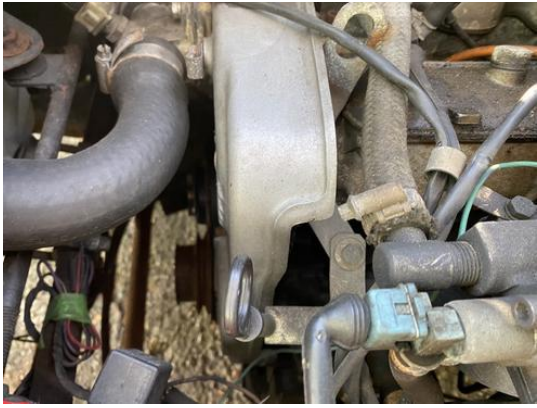


Photo 234



Photo 235



Photo 236



Photo 237



Photo 238



Photo 239



Photo 240

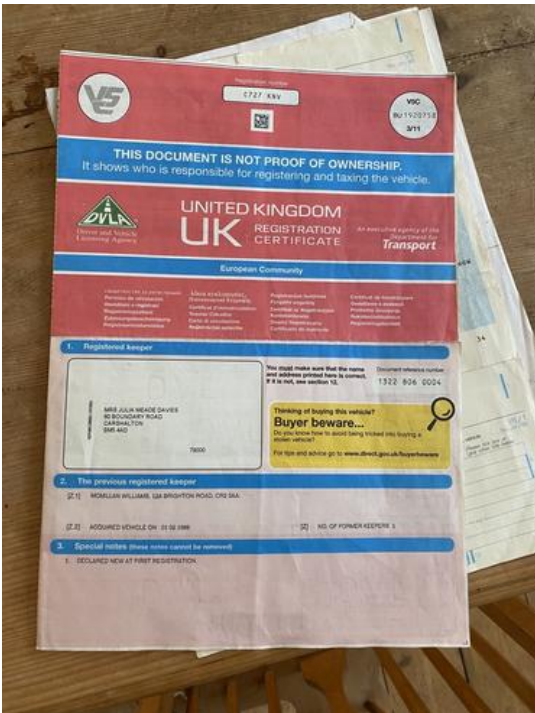


Photo 241

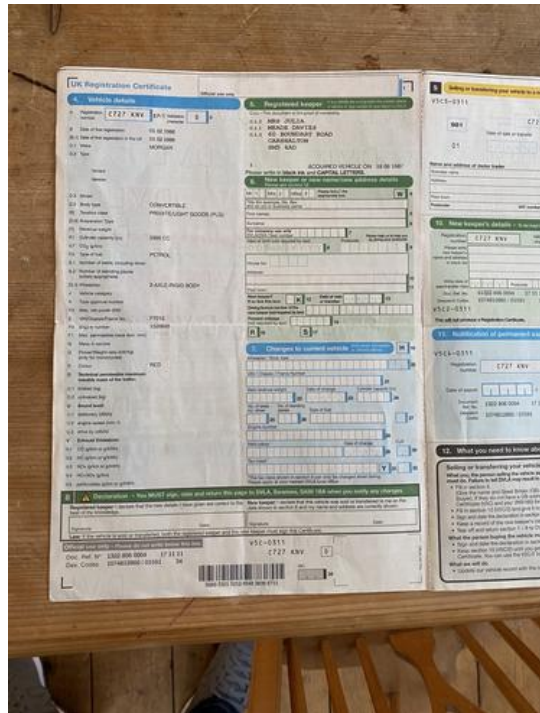


Photo 242



Photo 243